





## Advantage Program

At Adornus® we bring you this new program as the perfect solution to get our product directly to you even faster. Every cabinet will still be made in our South Carolina manufacturing facility built using only the highest quality sourced materials, industry leading machinery with an new streamlined production process, so we can meet the highest standard in the industry; yours. With the Advantage process we can meet your goals faster than ever before!

We know your kitchen is the heart of any home, so we take pride when we say that we are not in the kitchen cabinet business; we are in the business of creating memories that are as timeless as our products.

**FASTER POSSIBILITIES**

AN ENHANCED & STREAMLINED PROCESS

FROM OUR FACTORY TO YOU.

## **Policies and Ordering**

### **Privacy Policy**

Your privacy is important to Adornus Cabinetry. We use the information you provide us when placing an order only to complete that order. We do not share this information with outside parties except to the extent necessary to complete that order. We use return email addresses to answer the email we receive and to communicate your order status and verified shipping costs. Your information is not shared with outside parties.

### **Shipping**

Cabinet orders will be scheduled to be shipped by a dedicated Adornus truck or via a certified contract carrier. Cabinet orders that need to be expedited may be shipped via LTL common carrier, per request (additional charges may apply). Service and Warranty orders will typically ship when ready via UPS. Service and Warranty orders too large to ship via UPS will be scheduled on our private carrier truck or LTL by request (additional charges may apply).

### **Concealed Damage**

All concealed package damages must be reported within 30 days of receipt of order, all concealed package damages must be reported to Adornus in writing with supporting photos attached.

### **Design & Pricing Software**

Adornus supports **2020** design software. The catalog can be found within the Dealer Portal. Our catalog is produced by a third party, therefore Adornus cannot accept liability for discrepancies between design software and actual invoice. In all cases, actual invoice pricing will take precedence.

### **Care and Cleaning**

Cabinetry should be cleaned using a damp clean cloth. When cleaning, follow the grain of wood to avoid possible scratching. For more difficult residues, a mild soap or furniture cleaner can be used. When using anything more than water, we suggest that a test be performed in a concealed area first.

**ACPO** (Adornus Cabinetry Pricing and Ordering Program)

This program allows you to electronically price and submit orders, eliminating the need to hand-write and price your projects. All future orders will use this new program! **In order to receive ACPO**, you must first submit a request to **marketing@adornus.com**. You will then receive an invitation email from the program which will allow you to set up your own user name and password.

**Final Order**

**Order confirmations must be signed before the order will be released into production.** Lead times are based on receipt of both, the the signed confirmation and payment, not when the order is placed. Your final order will include a estimated week the order will be shipped. This estimation is a rough estimation only!

Final orders will not be sent to production prior to 100% payment.

**Service and Warranty Orders**

Warranty claims will be released to production WITHOUT a signed confirmation.

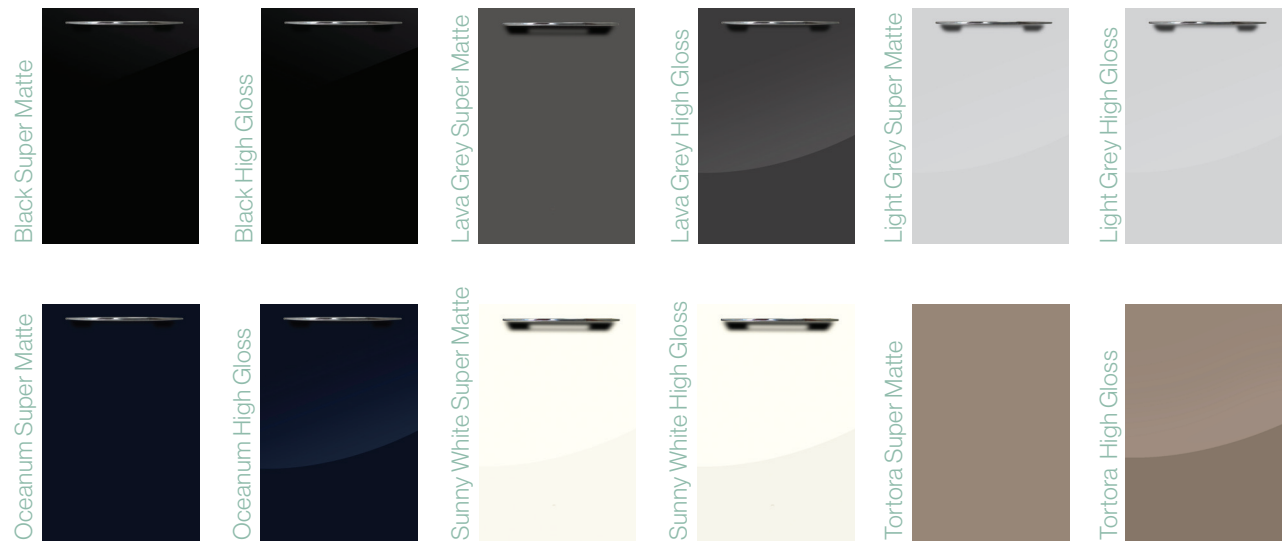
Warranty claims will be released 24 hours after receipt and approval of the claim. Please submit a clean and accurate claim as changes nor additions will not be allowed to be made after release to production. All warranty claims **MUST** be submitted with a photo of the item. Adornus will consider all claims that **DO NOT** include a cabinet box to be a service order and will be treated as such.

**TAKE THE  
ADVANTAGE  
WITH THESE  
POPULAR  
TRENDS &  
COLORS**

**PAINTED** DOOR FINISH (Available Hampton, Quincy, Vail, Fresno, Manhattan.)



**HIGH GLOSS & SUPER MATTE** DOOR FINISH (Available Only On SoHo Door)



**TEXTURED** DOOR FINISH (Available Only On SoHo Door)



# Advantage Series

## CABINET CONSTRUCTION SPECIFICATIONS

### Doors:

We use Select North American Hardwood for our cabinetry. It's a handsome selection that has been widely used in the manufacturing of cabinetry for years, its versatility and durability makes it a timeless classic in our industry.

### Box Material:

Our boxes are made of CARB Phase II certified plywood with wood veneer. There is no formaldehyde added in the process of making our plywood. The boxes are 3/4" plywood for sides, bottom and top (wall cabinets), and reinforced with 3/8" plywood backing. Our cabinet boxes are the sturdiest boxes you will find in the industry.

### Finish:

The Adornus Advantage doors are multi-step finished with a two-part post-catalyzed conversion varnish. We use formaldehyde free, high performance conversion varnish that is heat resistant, chemical resistant, and has exceptional nonyellowing characteristics. Conversion varnish is more durable and has a higher elasticity, which allows it to hold up better through joint expansion as compared to traditional lacquer. The boxes go through a UV finishing process, which is durable, environmentally-friendly and free from formaldehyde and hazardous substances. This process is not only safe but also kinder to the environment at our production facilities.

### Drawer boxes:

The drawer boxes for the Adornus Advantage are constructed from solid wood with a clear finish and is joined with tight dovetails. All drawers come with a 3/8" plywood floor.

### Shelving:

Two adjustable shelves come with every 30" and 36" high wall cabinet. Three adjustable shelves come with 42" high cabinets. One 15" deep, adjustable shelf comes with every top drawer base cabinet. Two 15" deep, adjustable shelves come with full height door base cabinets. Tall cabinets come with 21" deep shelves. Shelves are made of 3/4" plywood and edgebanded on front and back.

### Toe kicks:

We offer finished toekicks 96" x 4 1/2" x 1/4" for purchase separately.

### Drawer Glides:

SALICE under mounted, full extension, soft close.

### Hinges:

SALICE 6-way adjustable, concealed, 110 degree soft closing hinges. Specialty cabinets such as lazy susans and angle wall cabinets are not available with soft closing system.

---

## NO MODIFICATIONS CAN BE APPLIED TO ADORNUS ADVANTAGE.

### Modifications:

Advantage was created with the purpose of streamlining the process enabling you to get designer cabinets in combination with popular color choices from both signature and designer quicker than ever before. Modifications are prohibited in Advantage

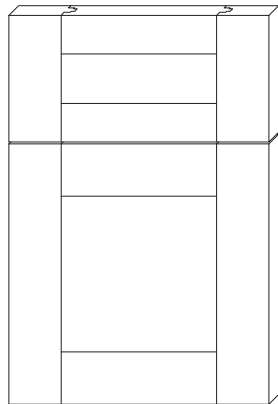
### Finish Charges:

All standard paint finishes are offered at no additional charge.

**NOTE:** Orders with 5 or less cabinets will incur an additional \$250 net set up fee.

## Door Specifications

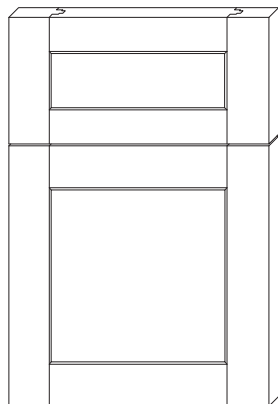
### Hampton



<b>Door Construction:</b>	Mortise and Tenon
<b>Door Frame:</b>	3" Stiles & Rails
<b>Door Panel:</b>	Recessed Panel
<b>Glass Prep:</b>	Available
<b>Minimum Door Width:</b>	6"
<b>Minimum Door Height:</b>	6"
<b>Price Group:</b>	Group A
<b>Drawer Front:</b>	5 Piece Hampton



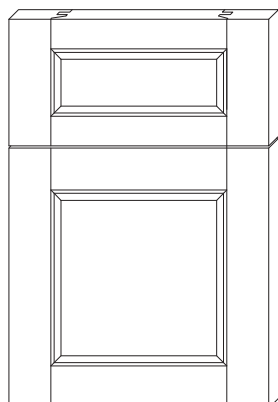
### Quincy



<b>Door Construction:</b>	Mortise and Tenon
<b>Door Frame:</b>	3" Stiles & Rails
<b>Door Panel:</b>	Recessed Panel
<b>Glass Prep:</b>	Available
<b>Minimum Door Width:</b>	6"
<b>Minimum Door Height:</b>	6"
<b>Price Group:</b>	Group A
<b>Drawer Front:</b>	5 Piece Quincy



### Vail

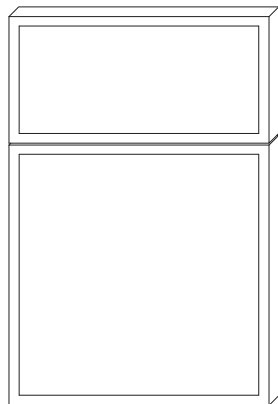


<b>Door Construction:</b>	Mortise and Tenon
<b>Door Frame:</b>	3" Stiles & Rails
<b>Door Panel:</b>	Recessed Panel
<b>Glass Prep:</b>	Available
<b>Minimum Door Width:</b>	6"
<b>Minimum Door Height:</b>	6"
<b>Price Group:</b>	Group A
<b>Drawer Front:</b>	5 Piece Vail



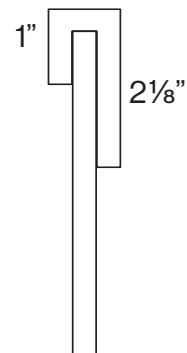
## Door Specifications

### Fresno

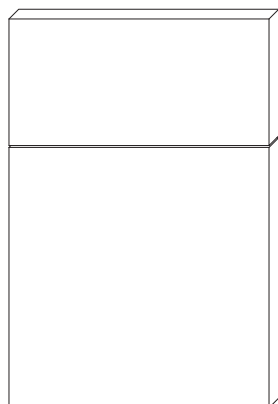


<b>Door Construction:</b>	Mortise and Tenon
<b>Door Frame:</b>	1" Stiles & Rails on front
<b>Door Panel:</b>	Recessed Panel
<b>Minimum Door Width:</b>	6"
<b>Minimum Door Height:</b>	6"
<b>Price Group:</b>	Group A
<b>Drawer Front:</b>	5 Piece Fresno

\*Available in Paint Only. MDF Door and Drawer.



### Manhattan

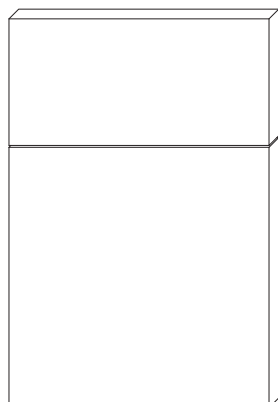


<b>Door Construction:</b>	N/A
<b>Door Frame:</b>	N/A
<b>Door Panel:</b>	N/A
<b>Minimum Door Width:</b>	6"
<b>Minimum Door Height:</b>	6"
<b>Price Group:</b>	Group A
<b>Drawer Front:</b>	Slab

\*Available in Paint Only. MDF Door and Drawer.



### SoHo



<b>Door Construction:</b>	N/A
<b>Door Frame:</b>	N/A
<b>Door Panel:</b>	N/A
<b>Minimum Door Width:</b>	6"
<b>Minimum Door Height:</b>	6"
<b>Price Group:</b>	Group A
<b>Drawer Front:</b>	Slab

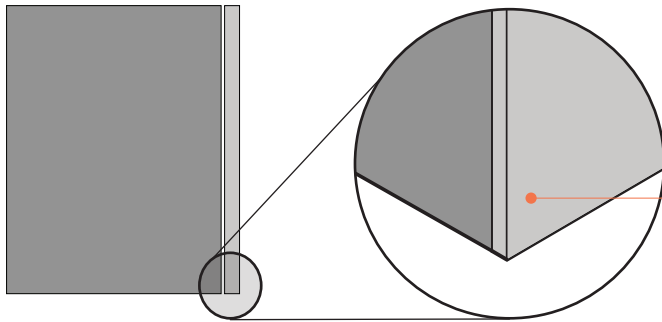
*FROM OUR ALLUSO COLLECTION*

\*Available in High Gloss, Super Matte, & Textured Finishes



## Wall Cabinet Door Sub Style Options (SoHo Only)

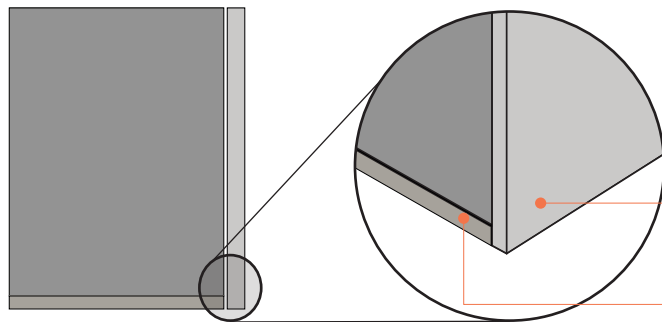
### STYLE OPTION - A (STANDARD)



- REQUIRES HANDLE OR TOUCH LATCH
- DOOR HAS STANDARD 1/16" REVEAL
- UNFINISHED BOTTOM

**FLUSH WITH CABINET BASE**

### STYLE OPTION - B

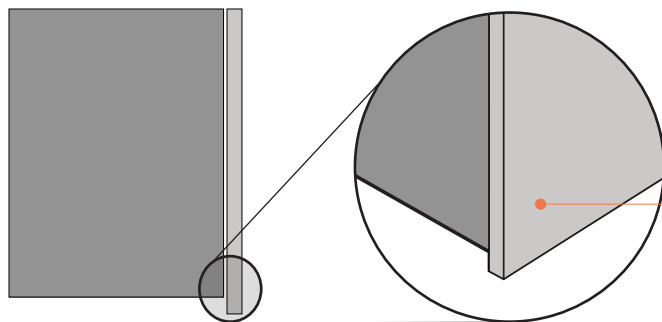


- REQUIRES HANDLE OR TOUCH LATCH
- DOOR DROPS DOWN AN ADDITIONAL 3/4"
- FINISHED BOTTOM

**INCREASED DOOR HEIGHT BY 3/4"**  
Door Is Lowered To Cover A 3/4" Panel.

**FINISHED BOTTOM:**  
3/4 Finished Panel  
Sold Separately.

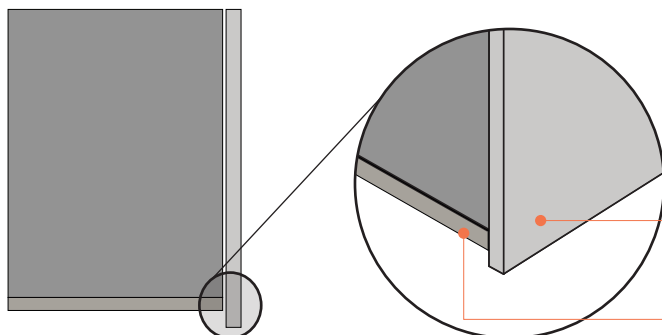
### STYLE OPTION - C



- NO HANDLE OR TOUCH LATCH REQUIRED
- DOOR DROPS DOWN AN ADDITIONAL 3/4"
- UNFINISHED BOTTOM

**INCREASED DOOR HEIGHT BY 3/4"**

### STYLE OPTION - D



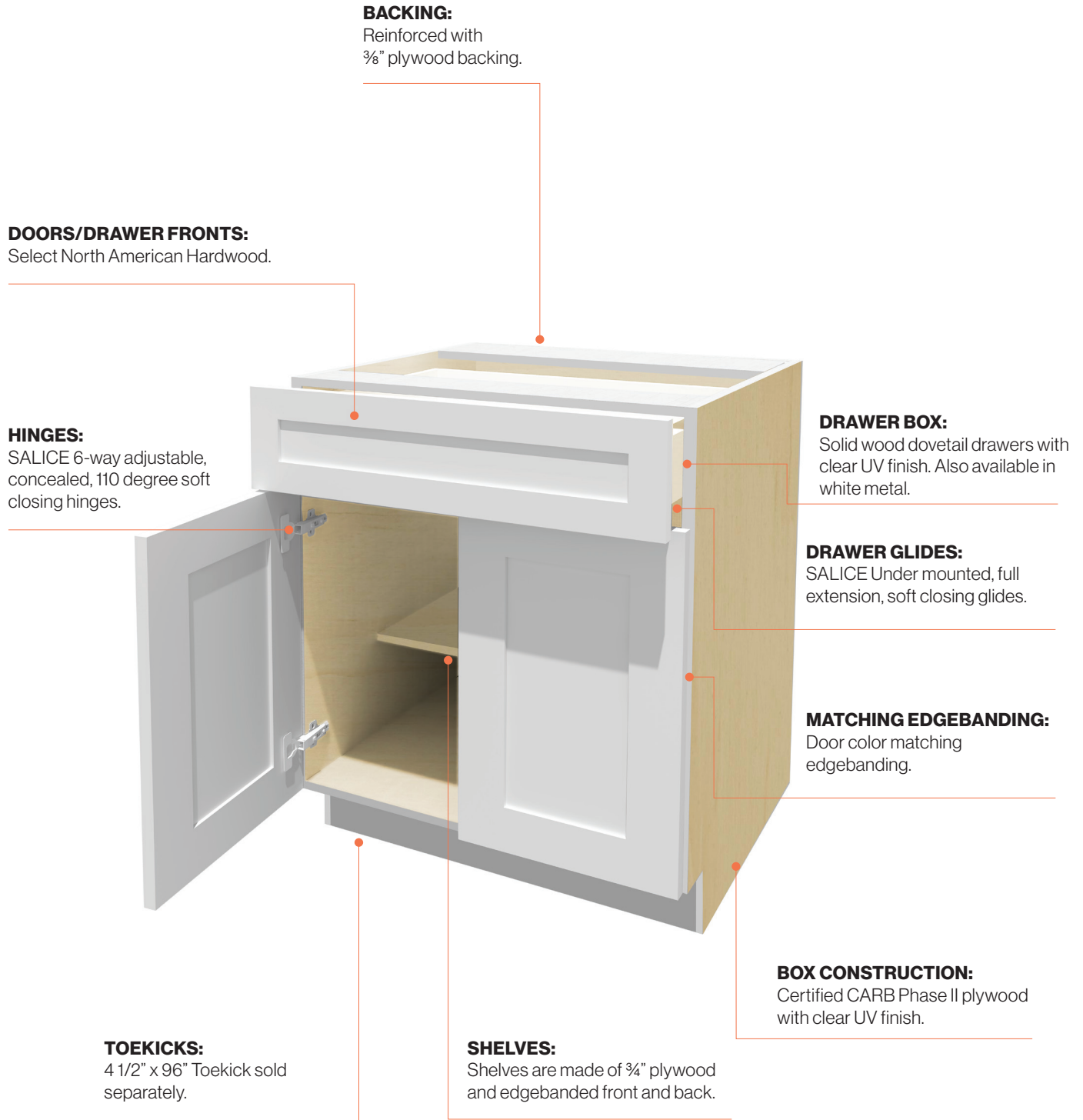
- NO HANDLE OR TOUCH LATCH REQUIRED
- DOOR DROPS DOWN AN ADDITIONAL 1 1/2"
- FINISHED BOTTOM

**INCREASED DOOR HEIGHT BY 1 1/2"**  
Door Covers and Extends Past A 3/4" Panel

**FINISHED BOTTOM:**  
3/4 Finished Panel  
Sold Separately.

# Advantage Series

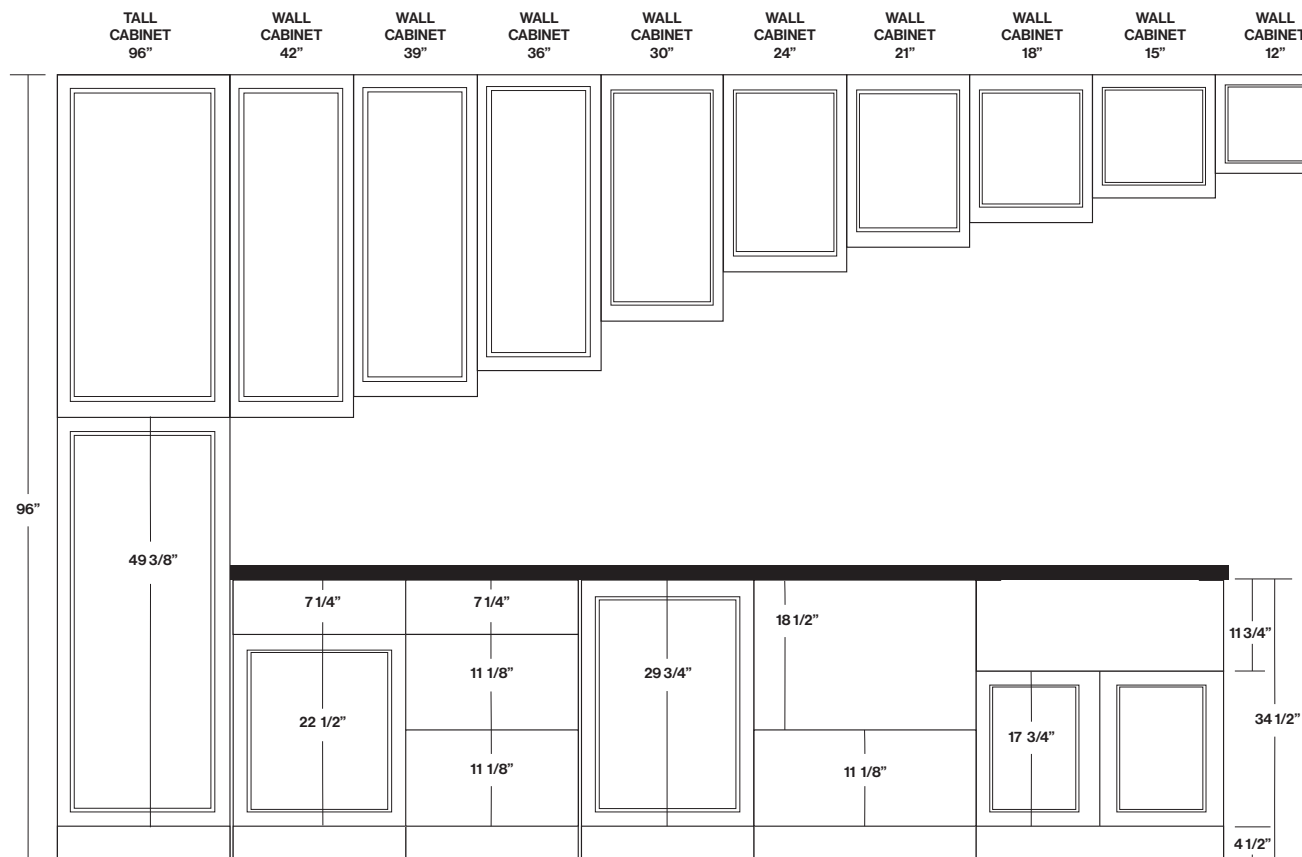
## ● Cabinet Construction At a Glance



<sup>(1)</sup> 3/8" Backing with two (2) 3/4" Top and Bottom nailers.

<sup>(2)</sup> Please specify finished end on order form to color match.

## Door Sizing



### REVEALS

#### Wall Cabinets:

1/16" on left, right, top and bottom

#### Base and Vanity Cabinets:

1/16" on left and right side

1/4" on top, no reveal on bottom

1/8" between doors and drawer fronts

#### Tall Cabinets:

1/16" on left and right side

1/16" on top, no reveal on bottom

3/16" between top and bottom doors

### ALIGNMENT

#### Utility Tall 84":

Top door lines up with 30" Wall Cabinet

#### Utility Tall 90":

Top door lines up with 36" Wall Cabinet

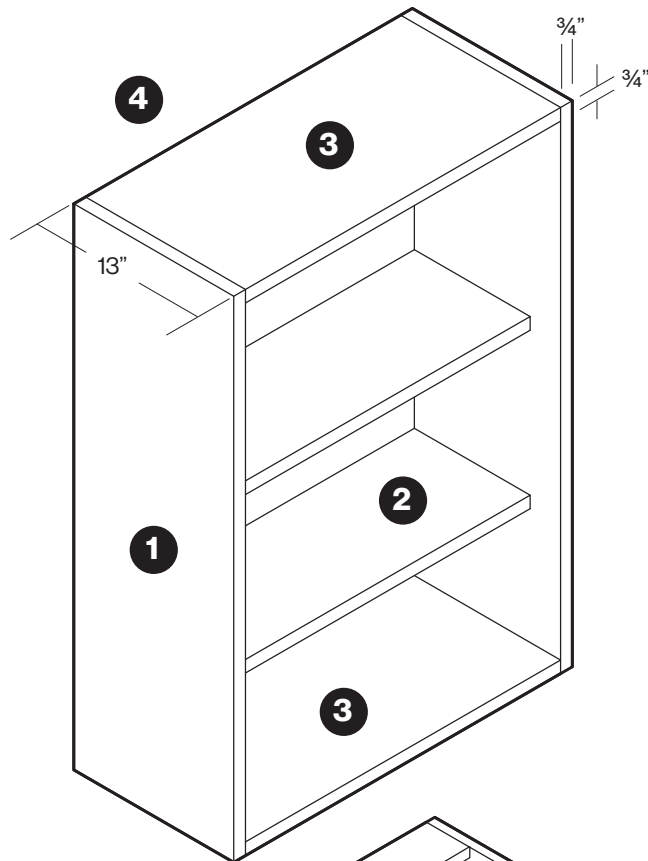
#### Utility Tall 93":

Top door lines up with 39" Wall Cabinet

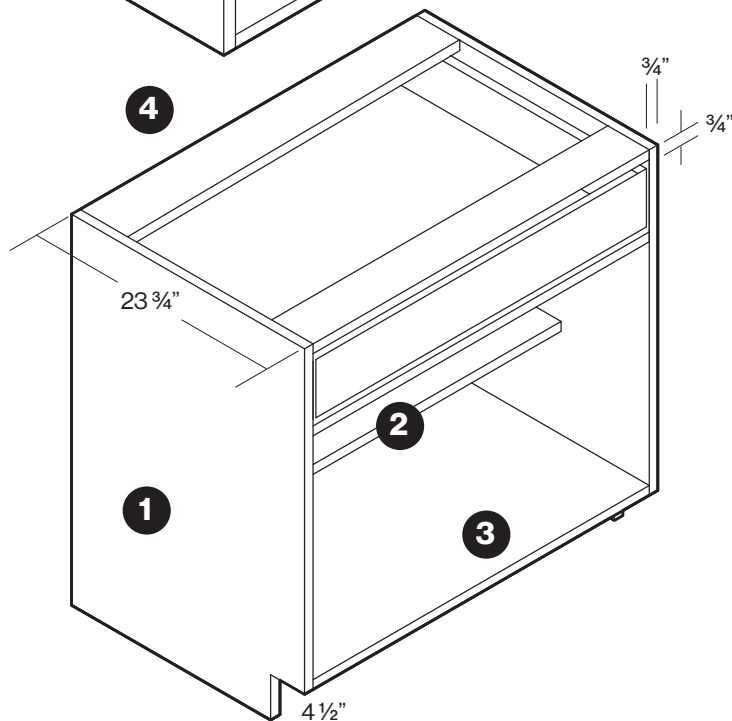
#### Utility Tall 96":

Top door lines up with 42" Wall Cabinet

## Full Access Cabinet Specifications

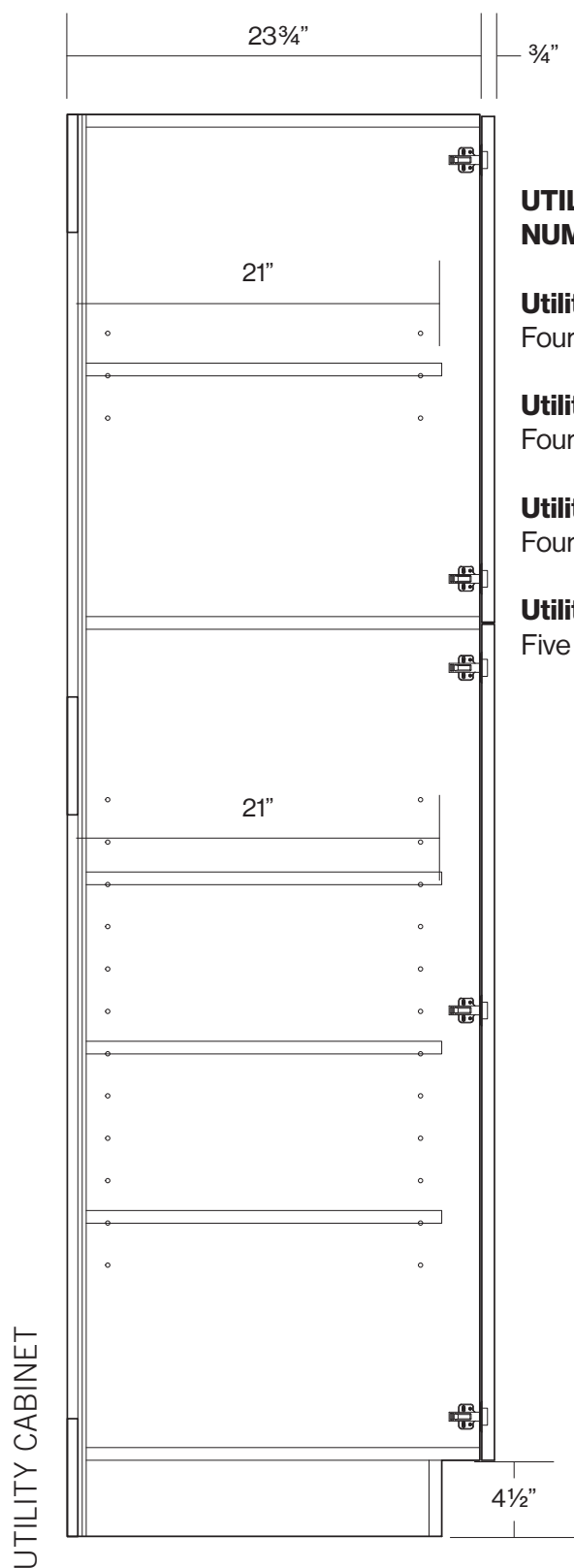


- 1** 3/4" Sides
- 2** 3/4" Adjustable Shelves
- 3** 3/4" Top and Bottom
- 4** 3/8" Plywood Back with 3/4" top and bottom nailers



- 1** 3/4" Sides
- 2** 3/4" Adjustable Shelves
- 3** 3/4" Bottom
- 4** 3/8" Plywood Back with 3/4" top and bottom nailers

## Full Access Tall, Wall and Base Cabinet Specifications



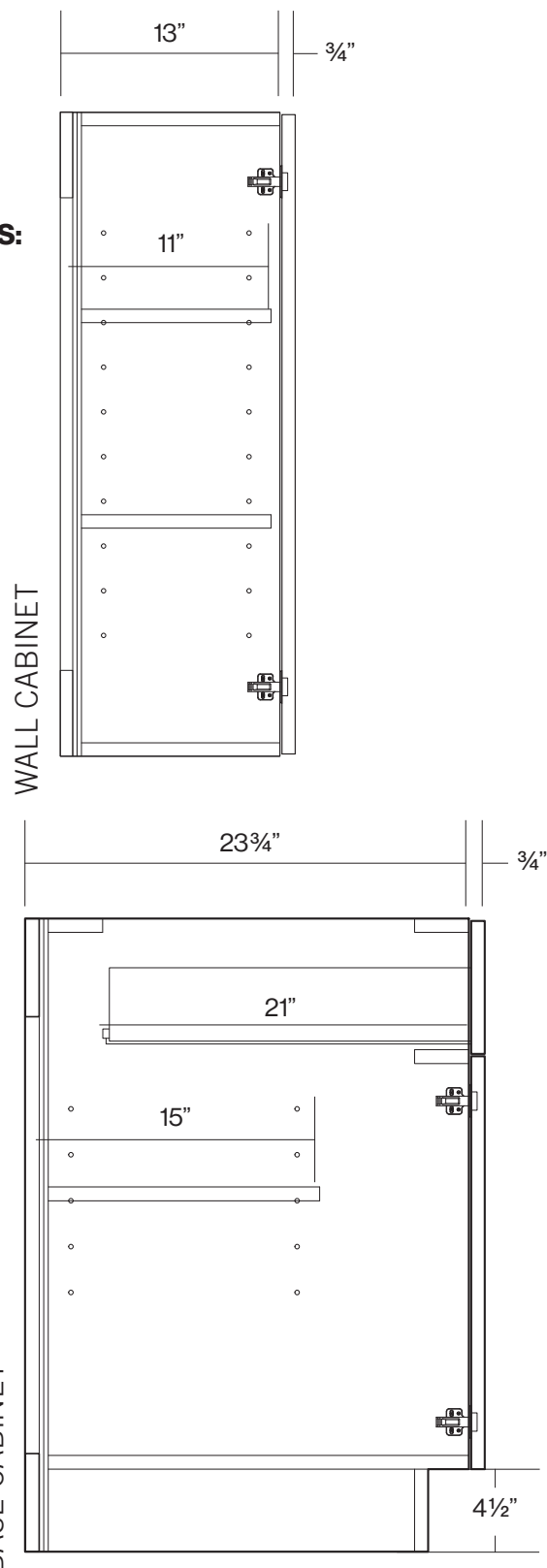
### UTILITY CABINET NUMBER OF SHELVES:

**Utility 84":**  
Four Shelves

**Utility 90":**  
Four Shelves

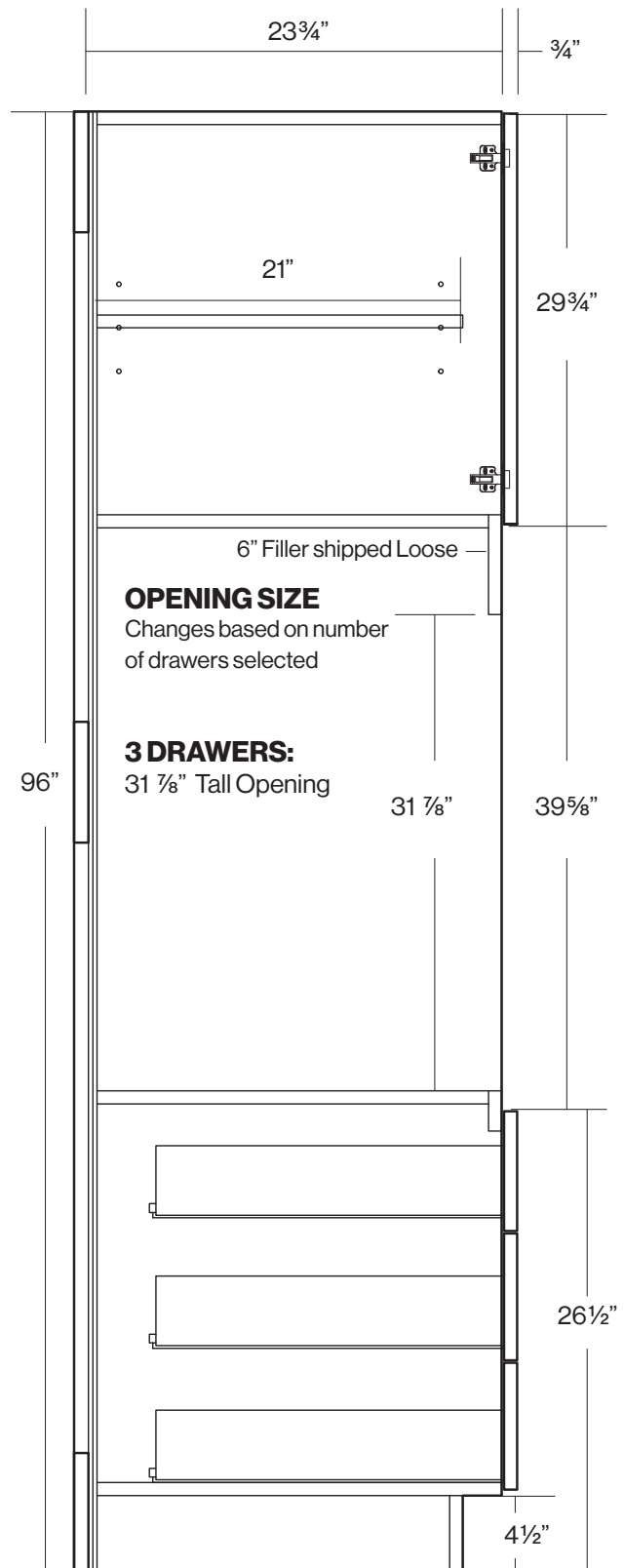
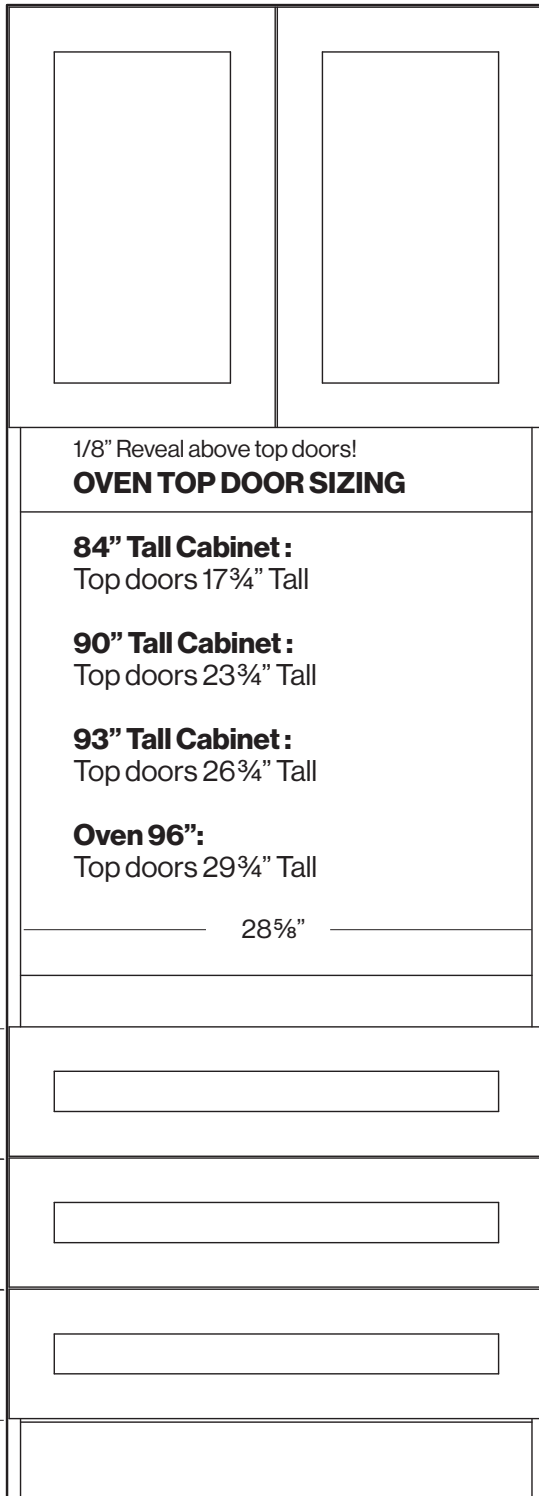
**Utility 93":**  
Four Shelves

**Utility 96":**  
Five Shelves



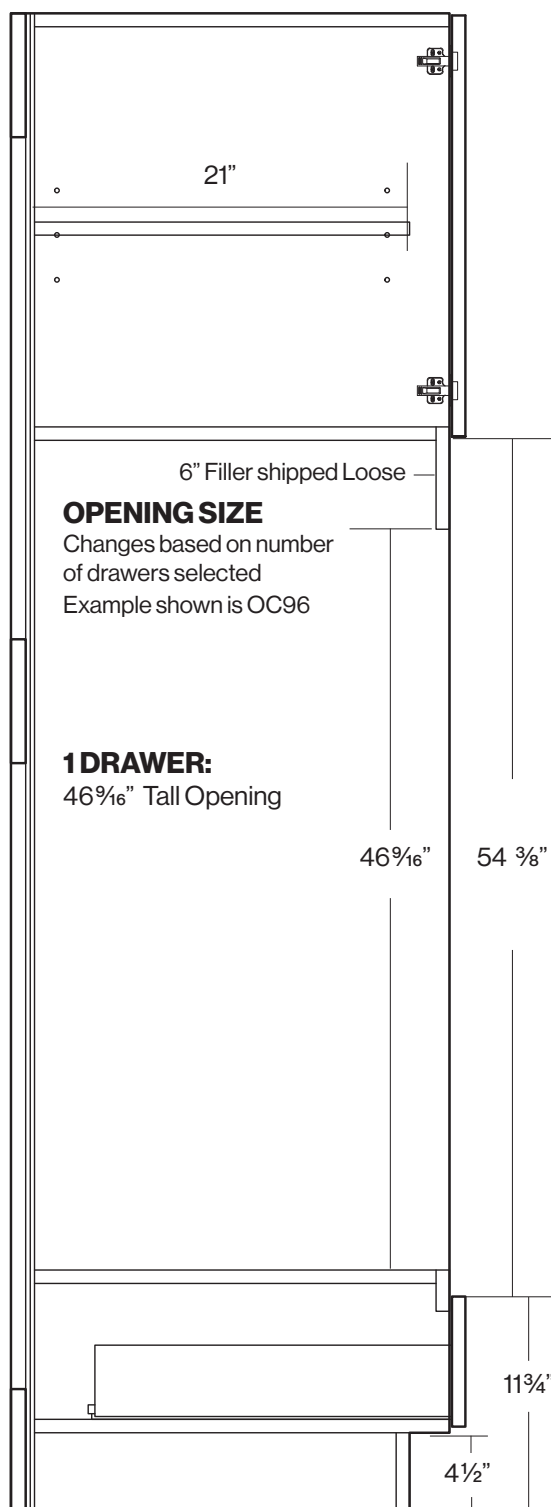
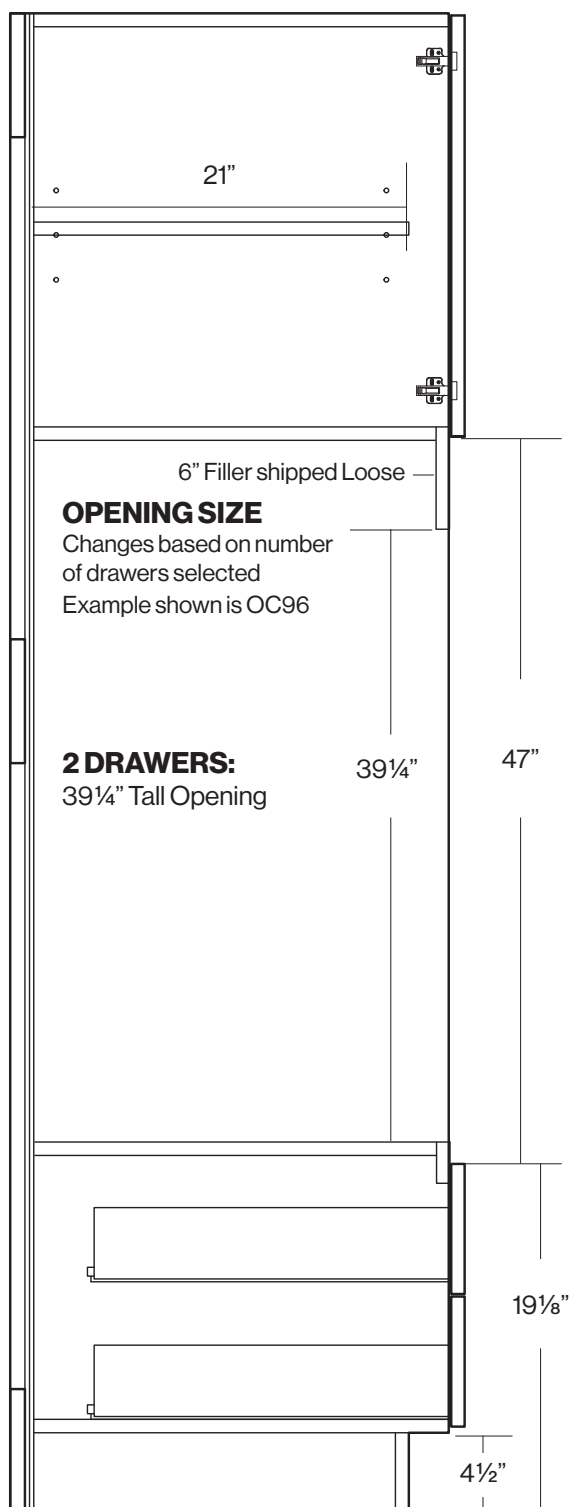
## Full Access Oven Cabinet Specifications

Top Doors change based on  
Oven height. All drawers are  $7\frac{1}{4}"$   
Choose 1, 2, or 3 Drawers.



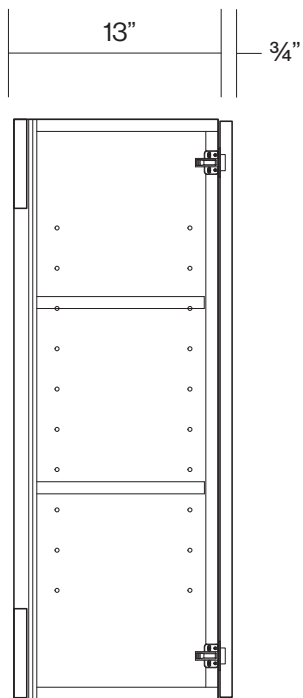
## Full Access Oven Cabinet Specifications

*Consider the height of any appliances before selecting the number of drawers for oven cabinets.*



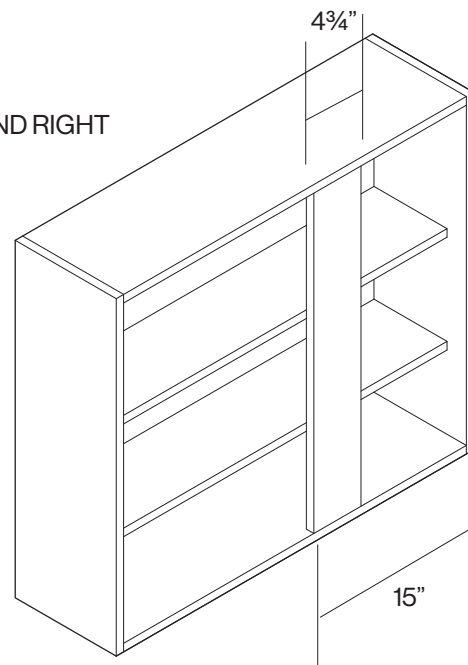
## Full Access Blind Corner Cabinet Specifications

WALL BLIND CORNER

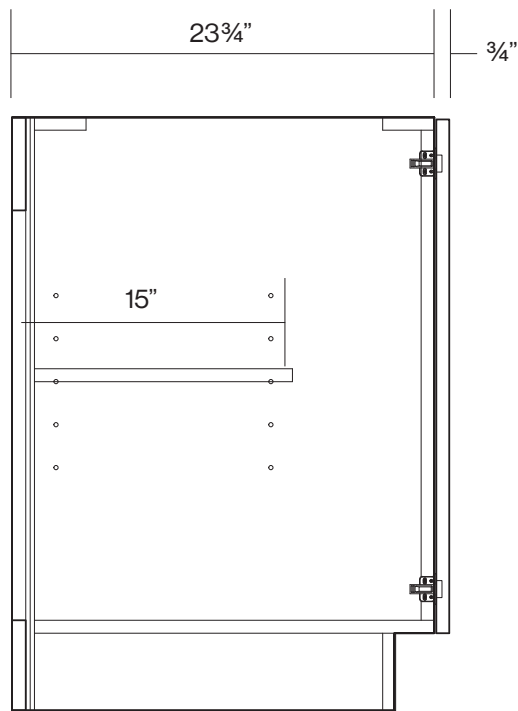


\*NO PULL REQUIRED

SHOWN BLIND RIGHT

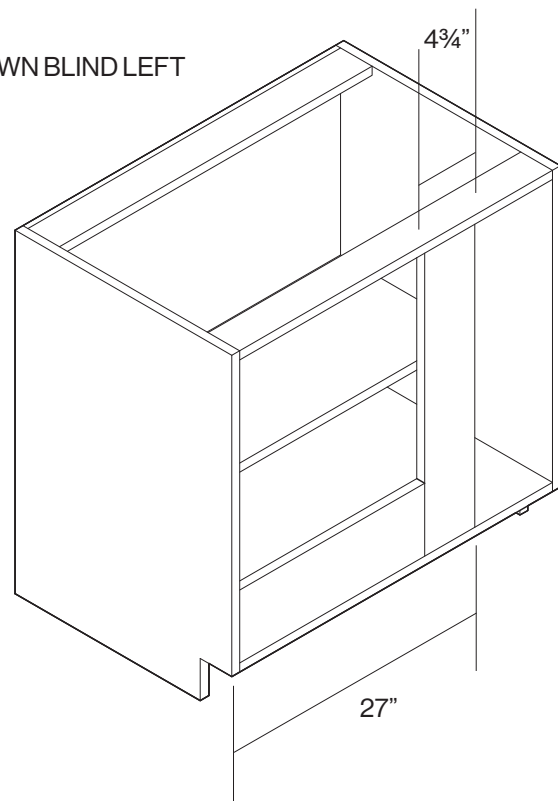


BASE BLIND CORNER



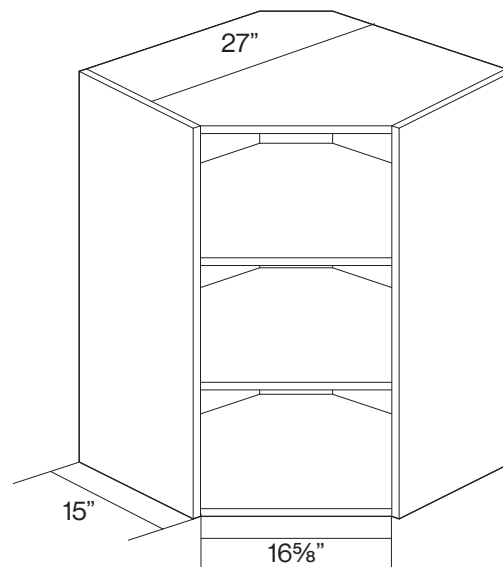
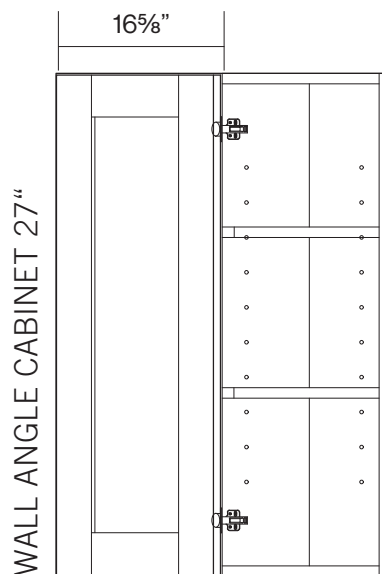
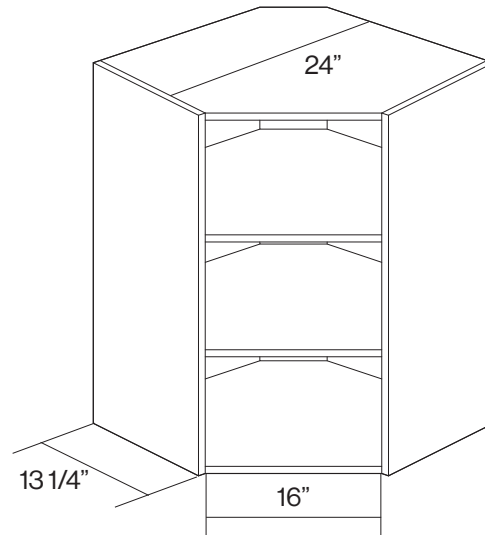
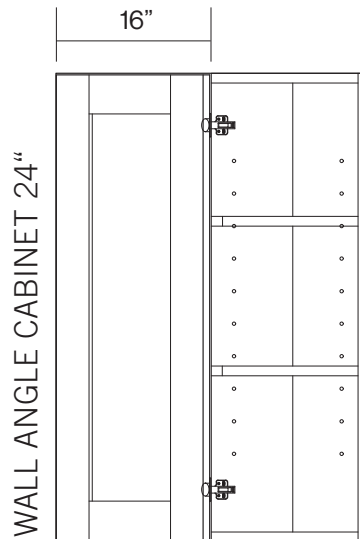
\*NO PULL REQUIRED

SHOWN BLIND LEFT

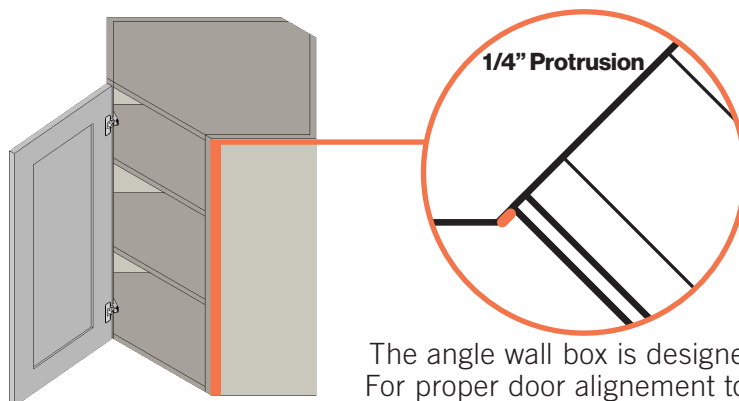


HINGE SIDE DETERMINS BLIND SIDE (BLIND LEFT = HINGE LEFT)

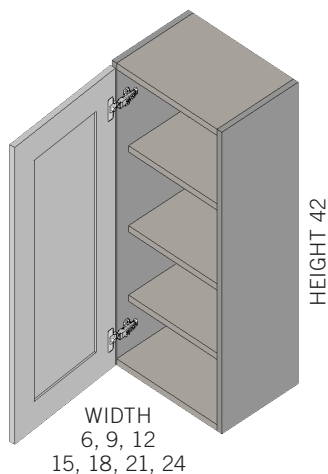
## Full Access Angle Cabinet Specifications



### PROPER ANGLE WALL CABINET POSITIONING

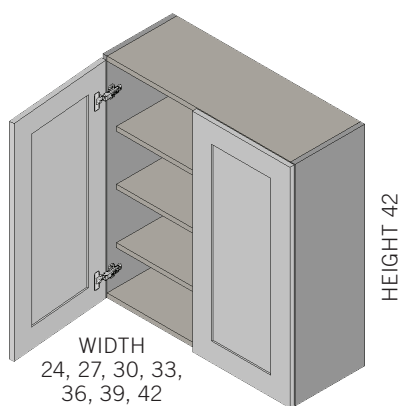


The angle wall box is designed to protrude 1/4"  
For proper door alignment to adjacent cabinets



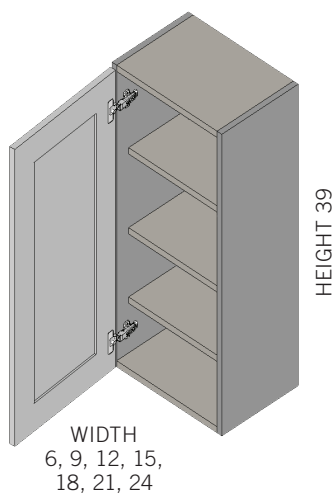
### Wall Cabinet 42" High Single Door

Item No.	Width	Height	Depth	Shelves	Price
W0642	6	42	13	3	407
W0942	9	42	13	3	453
W1242	12	42	13	3	542
W1542	15	42	13	3	602
W1842	18	42	13	3	664
W2142	21	42	13	3	742
W2442-S	24	42	13	3	809



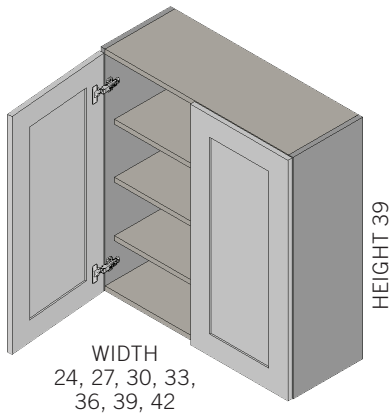
### Wall Cabinet 42" High Double Door

Item No.	Width	Height	Depth	Shelves	Price
W2442-2	24	42	13	3	852
W2742	27	42	13	3	934
W3042	30	42	13	3	995
W3342	33	42	13	3	1072
W3642	36	42	13	3	1173
W3942	39	42	13	3	1274
W4242	42	42	13	3	1379



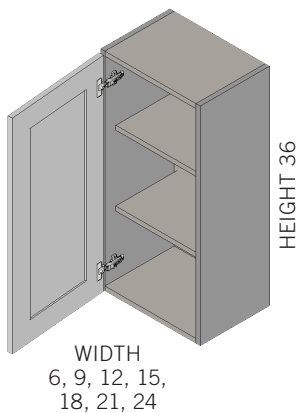
### Wall Cabinet 39" High Single Door

Item No.	Width	Height	Depth	Shelves	Price
W0639	6	39	13	3	378
W0939	9	39	13	3	421
W1239	12	39	13	3	503
W1539	15	39	13	3	559
W1839	18	39	13	3	616
W2139	21	39	13	3	690
W2439-S	24	39	13	3	740



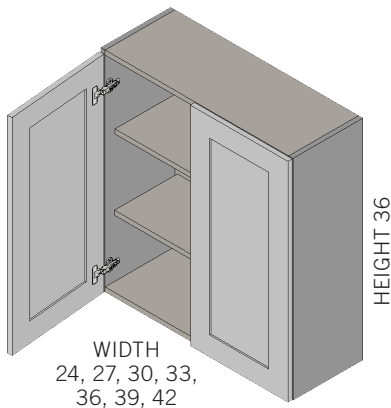
### Wall Cabinet 39" High Double Door

Item No.	Width	Height	Depth	Shelves	Price
W2439-2	24	39	13	3	791
W2739	27	39	13	3	868
W3039	30	39	13	3	924
W3339	33	39	13	3	995
W3639	36	39	13	3	1089
W3939	39	39	13	3	1187
W4239	42	39	13	3	1290



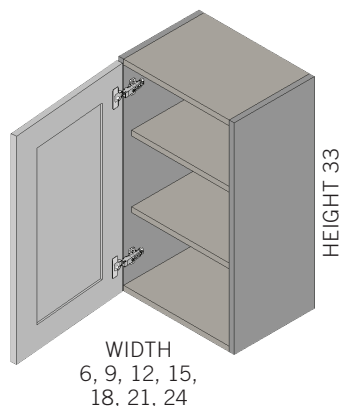
### Wall Cabinet 36" High Single Door

Item No.	Width	Height	Depth	Shelves	Price
W0636	6	36	13	2	349
W0936	9	36	13	2	388
W1236	12	36	13	2	464
W1536	15	36	13	2	516
W1836	18	36	13	2	568
W2136	21	36	13	2	636
W2436-S	24	36	13	2	718



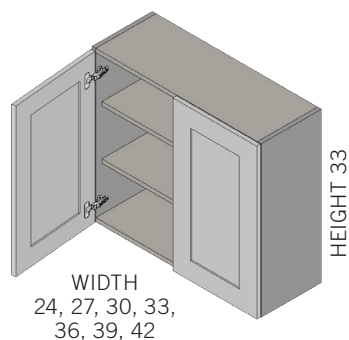
### Wall Cabinet 36" High Double Door

Item No.	Width	Height	Depth	Shelves	Price
W2436-2	24	36	13	2	730
W2736	27	36	13	2	801
W3036	30	36	13	2	853
W3336	33	36	13	2	918
W3636	36	36	13	2	1005
W3936	39	36	13	2	1096
W4236	42	36	13	2	1201



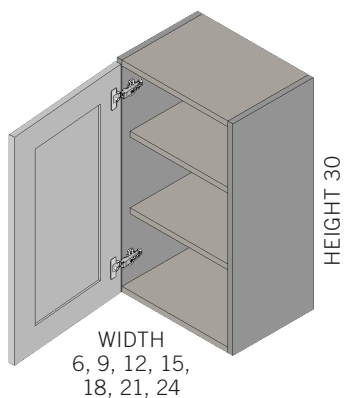
### Wall Cabinet 33" High Single Door

Item No.	Width	Height	Depth	Shelves	Price
W0633	6	33	13	2	324
W0933	9	33	13	2	360
W1233	12	33	13	2	430
W1533	15	33	13	2	479
W1833	18	33	13	2	528
W2133	21	33	13	2	590
W2433-S	24	33	13	2	665



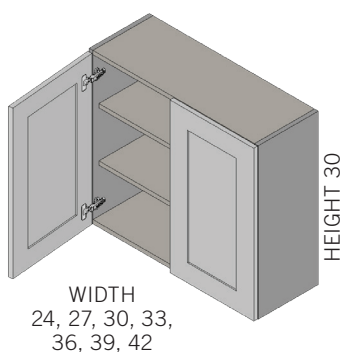
### Wall Cabinet 33" High Double Door

Item No.	Width	Height	Depth	Shelves	Price
W2433-2	24	33	13	2	677
W2733	27	33	13	2	743
W3033	30	33	13	2	791
W3333	33	33	13	2	852
W3633	36	33	13	2	932
W3933	39	33	13	2	1014
W4233	42	33	13	2	1099



### Wall Cabinet 30" High Single Door

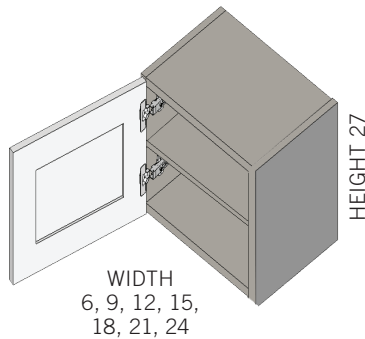
Item No.	Width	Height	Depth	Shelves	Price
W0630	6	30	13	2	298
W0930	9	30	13	2	331
W1230	12	30	13	2	396
W1530	15	30	13	2	441
W1830	18	30	13	2	486
W2130	21	30	13	2	543
W2430-S	24	30	13	2	612



### Wall Cabinet 30" High Double Door

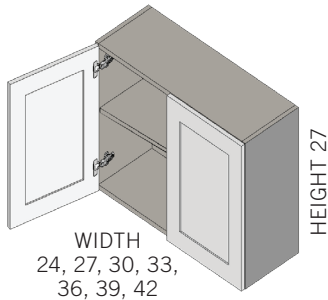
Item No.	Width	Height	Depth	Shelves	Price
W2430-2	24	30	13	2	624
W2730	27	30	13	2	684
W3030	30	30	13	2	729
W3330	33	30	13	2	785
W3630	36	30	13	2	859
W3930	39	30	13	2	889
W4230	42	30	13	2	997

### Wall Cabinet 27" High Single Door



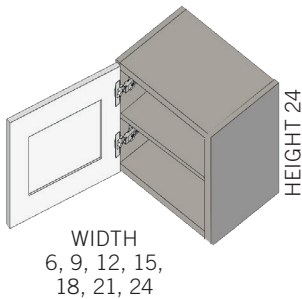
Item No.	Width	Height	Depth	Shelves	Price
W0627	6	27	13	1	272
W0927	9	27	13	1	302
W1227	12	27	13	1	336
W1527	15	27	13	1	378
W1827	18	27	13	1	422
W2127	21	27	13	1	462
W2427-S	24	27	13	1	501

### Wall Cabinet 27" High Double Door



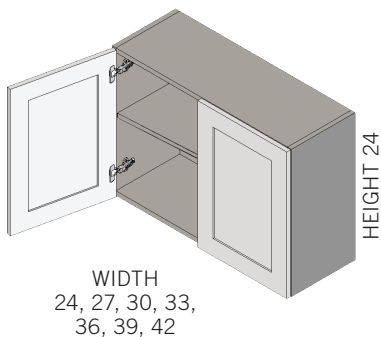
Item No.	Width	Height	Depth	Shelves	Price
W2427-2	24	27	13	1	513
W2727	27	27	13	1	625
W3027	30	27	13	1	667
W3327	33	27	13	1	718
W3627	36	27	13	1	786
W3927	39	27	13	1	922
W4227	42	27	13	1	982

### Wall Cabinet 24" High Single Door

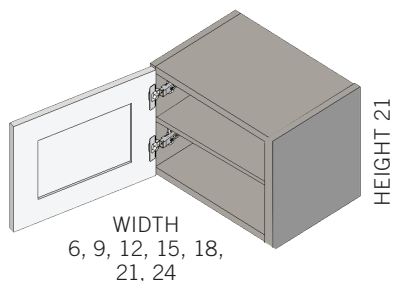


Item No.	Width	Height	Depth	Shelves	Price
W0624	6	24	13	1	246
W0924	9	24	13	1	273
W1224	12	24	13	1	301
W1524	15	24	13	1	331
W1824	18	24	13	1	369
W2124	21	24	13	1	401
W2424-S	24	24	13	1	442

### Wall Cabinet 24" High Double Door

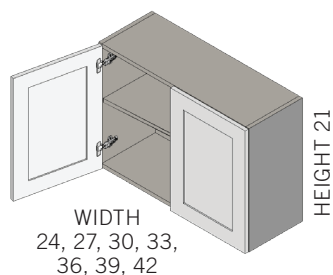


Item No.	Width	Height	Depth	Shelves	Price
W2424-2	24	24	13	1	454
W2724	27	24	13	1	517
W3024	30	24	13	1	579
W3324	33	24	13	1	641
W3624	36	24	13	1	703
W3924	39	24	13	1	771
W4224	42	24	13	1	873



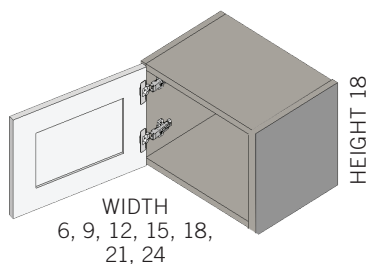
### Wall Cabinet 21" High Single Door

Item No.	Width	Height	Depth	Shelves	Price
W0621	6	21	13	1	244
W0921	9	21	13	1	256
W1221	12	21	13	1	266
W1521	15	21	13	1	284
W1821	18	21	13	1	307
W2121	21	21	13	1	334
W2421-S	24	21	13	1	361



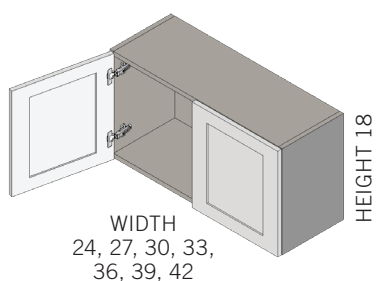
### Wall Cabinet 21" High Double Door

Item No.	Width	Height	Depth	Shelves	Price
W2421-2	24	21	13	1	373
W2721	27	21	13	1	450
W3021	30	21	13	1	527
W3321	33	21	13	1	604
W3621	36	21	13	1	631
W3921	39	21	13	1	658
W4221	42	21	13	1	697



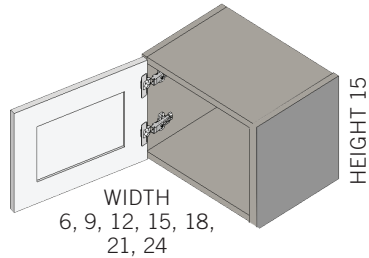
### Wall Cabinet 18" High Single Door

Item No.	Width	Height	Depth	Shelves	Price
W0618	6	18	13	0	242
W0918	9	18	13	0	261
W1218	12	18	13	0	279
W1518	15	18	13	0	291
W1818	18	18	13	0	301
W2118	21	18	13	0	331
W2418-S	24	18	13	0	357



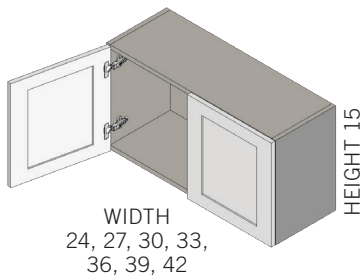
### Wall Cabinet 18" High Double Door

Item No.	Width	Height	Depth	Shelves	Price
W2418-2	24	18	13	0	369
W2718	27	18	13	0	456
W3018	30	18	13	0	475
W3318	33	18	13	0	494
W3618	36	18	13	0	571
W3918	39	18	13	0	648
W4218	42	18	13	0	689



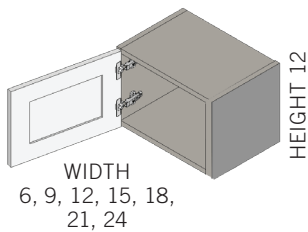
### Wall Cabinet 15" High Single Door

Item No.	Width	Height	Depth	Shelves	Price
W0615	6	15	13	0	239
W0915	9	15	13	0	254
W1215	12	15	13	0	268
W1515	15	15	13	0	287
W1815	18	15	13	0	298
W2115	21	15	13	0	325
W2415-S	24	15	13	0	348



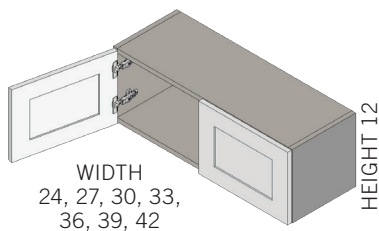
### Wall Cabinet 15" High Double Door

Item No.	Width	Height	Depth	Shelves	Price
W2415-2	24	15	13	0	371
W2715	27	15	13	0	419
W3015	30	15	13	0	443
W3315	33	15	13	0	467
W3615	36	15	13	0	491
W3915	39	15	13	0	572
W4215	42	15	13	0	663



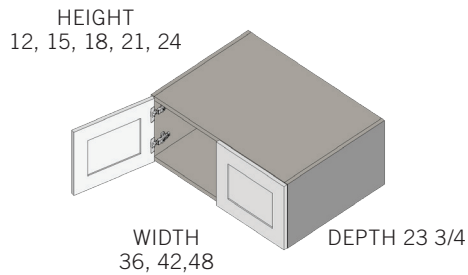
### Wall Cabinet 12" High Single Door

Item No.	Width	Height	Depth	Shelves	Price
W0612	6	12	13	0	227
W0912	9	12	13	0	241
W1212	12	12	13	0	258
W1512	15	12	13	0	279
W1812	18	12	13	0	292
W2112	21	12	13	0	318
W2412-S	24	12	13	0	337



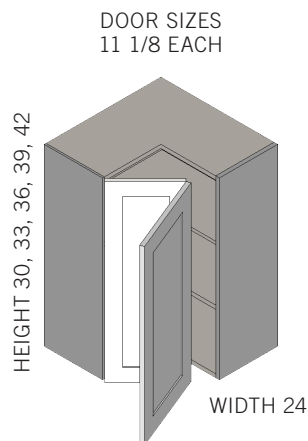
### Wall Cabinet 12" High Double Door

Item No.	Width	Height	Depth	Shelves	Price
W2412-2	24	12	13	0	349
W2712	27	12	13	0	387
W3012	30	12	13	0	404
W3312	33	12	13	0	421
W3612	36	12	13	0	439
W3912	39	12	13	0	492
W4212	42	12	13	0	581



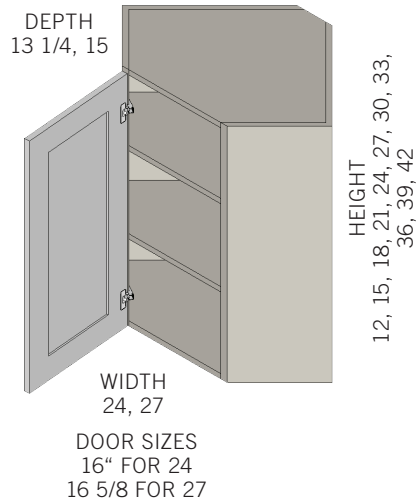
## Wall Cabinet 24" Deep Refrigerator Wall

Item No.	Width	Height	Depth	Shelves	Price
RW361224	36	12	23 3/4	0	652
RW421224	42	12	23 3/4	0	814
RW361524	36	15	23 3/4	0	687
RW421524	42	15	23 3/4	0	928
RW361824	36	18	23 3/4	0	760
RW421824	42	18	23 3/4	0	965
RW362124	36	21	23 3/4	1	884
RW422124	42	21	23 3/4	1	976
RW362424	36	24	23 3/4	1	869
RW422424	42	24	23 3/4	1	1222
RW482424	48	24	23 3/4	1	1399



## Wall Easy Reach

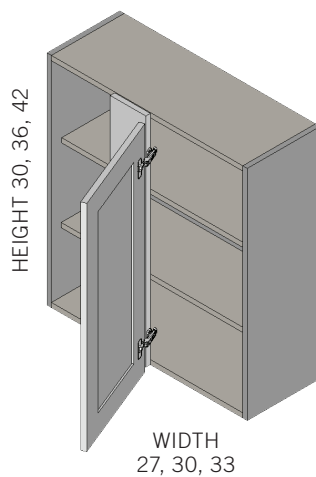
Item No.	Width	Height	Depth	Shelves	Price
WEZR2430	24	30	13	2	899
WEZR2433	24	33	13	2	951
WEZR2436	24	36	13	2	1002
WEZR2439	24	39	13	3	1140
WEZR2442	24	42	13	3	1278



The AW box is designed to protrude 1/4" for proper door alignment to adjacent cabinets

## Angle Wall Cabinet

Item No.	Width	Height	Depth	Shelves	Price
AWC2412	24	12	13 1/4	0	256
AWC2415	24	15	13 1/4	0	352
AWC2418	24	18	13 1/4	0	448
AWC2421	24	21	13 1/4	1	544
AWC2424	24	24	13 1/4	1	640
AWC2427	24	27	13 1/4	1	736
AWC2430	24	30	13 1/4	2	832
AWC2436	24	36	13 1/4	2	974
AWC2439	24	39	13 1/4	3	980
AWC2442	24	42	13 1/4	3	1116
AWC2712-15	27	12	15	0	355
AWC2715-15	27	15	15	0	451
AWC2718-15	27	18	15	0	547
AWC2721-15	27	21	15	1	643
AWC2724-15	27	24	15	1	739
AWC2727-15	27	27	15	1	835
AWC2730-15	27	30	15	2	931
AWC2736-15	27	36	15	2	1123
AWC2739-15	27	39	15	3	1219
AWC2742-15	27	42	15	3	1315



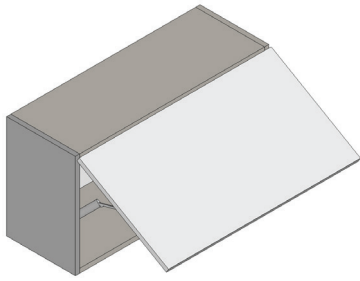
Right or Left

SHOWN AS LEFT DOOR SWING

Door sizes are 14<sup>7/8</sup>, 17<sup>7/8</sup>  
and 20<sup>7/8</sup> Respectively

## Wall Blind Corner

Item No.	Width	Height	Depth	Shelves	Price
WBC2730	27	30	13	2	780
WBC3030	30	30	13	2	883
WBC3330	33	30	13	2	986
WBC2736	27	36	13	2	857
WBC3036	30	36	13	2	1002
WBC3336	33	36	13	2	1105
WBC2742	27	42	13	3	934
WBC3042	30	42	13	3	1121
WBC3342	33	42	13	3	1224

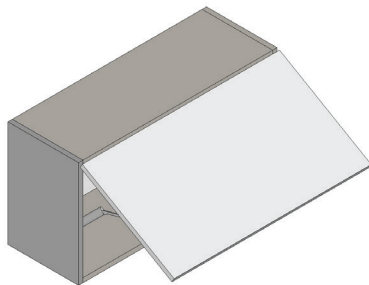


- SINGLE DOOR TOP HINGE
- LIFT MECHANISM INCLUDED  
(SPECIFICATIONS ON PAGE 29)

AVAILABLE WIDTHS:  
24" | 30" | 33" | 36"

### Wall Cabinets 24" Top Hinge

Item No.	Width	Height	Depth	Price
W2424-UP	24	24	13	884
W3024-UP	30	24	13	1044
W3324-UP	33	24	13	1282
W3624-UP	36	24	13	1406
W362424-UP	36	24	23 ¾	1622

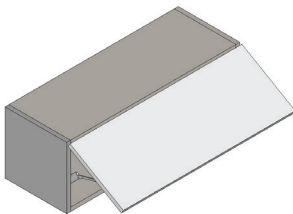


- SINGLE DOOR TOP HINGE
- LIFT MECHANISM INCLUDED  
(SPECIFICATIONS ON PAGE 29)

AVAILABLE WIDTHS:  
24" | 30" | 33" | 36"

### Wall Cabinets 18" Top Hinge

Item No.	Width	Height	Depth	Price
W2418-UP	24	18	13	792
W3018-UP	30	18	13	875
W3318-UP	33	18	13	918
W3618-UP	36	18	13	960
W361824-UP	36	18	23 ¾	1239



- SINGLE DOOR TOP HINGE
- LIFT MECHANISM INCLUDED  
(SPECIFICATIONS ON PAGE 29)

AVAILABLE WIDTHS:  
24" | 30" | 33" | 36"

### Wall Cabinets 12" Top Hinge

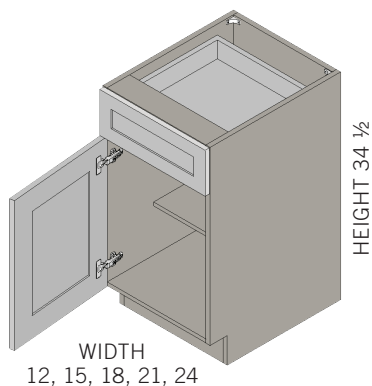
Item No.	Width	Height	Depth	Price
W2412-UP	24	12	13	674
W3012-UP	30	12	13	747
W3312-UP	33	12	13	791
W3612-UP	36	12	13	809
W361224-UP	36	12	23 ¾	1194

## Salice Wind Lift Specifications



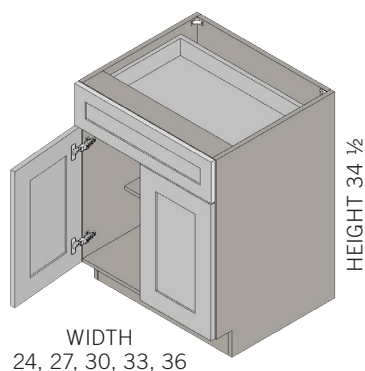
With soft closing system for single doors  
Small and compact lifting system fixed to the cabinet sides

- **Wooden doors**
- **Door height from 220 to 600 mm**
- **Door weight from 1,5 to 24 kg**
- **85° - 94° opening**
- **Adjustable spring strength**



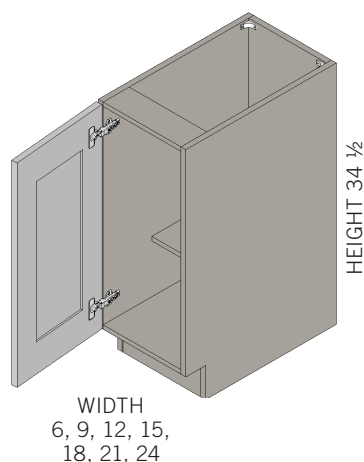
### Base Cabinet Single Door - Single Drawer

Item No.	Width	Height	Depth	Shelves	Price
B12	12	34-1/2	23 3/4	1	516
B15	15	34-1/2	23 3/4	1	582
B18	18	34-1/2	23 3/4	1	637
B21	21	34-1/2	23 3/4	1	691
B24-S	24	34-1/2	23 3/4	1	718



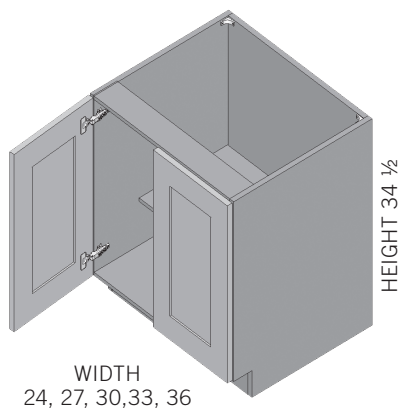
### Base Cabinet Double Door - Single Drawer

Item No.	Width	Height	Depth	Shelves	Price
B24-2	24	34-1/2	23 3/4	1	734
B27	27	34-1/2	23 3/4	1	832
B30	30	34-1/2	23 3/4	1	885
B33	33	34-1/2	23 3/4	1	932
B36	36	34-1/2	23 3/4	1	986



### Base Cabinet Full Height Single Door

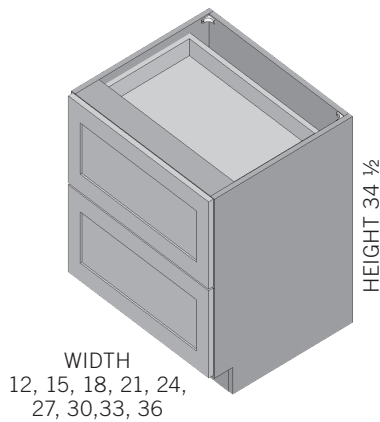
Item No.	Width	Height	Depth	Shelves	Price
FH-B06	6	34-1/2	23 3/4	1	407
FH-B09	9	34-1/2	23 3/4	1	453
FH-B12	12	34-1/2	23 3/4	1	542
FH-B15	15	34-1/2	23 3/4	1	602
FH-B18	18	34-1/2	23 3/4	1	664
FH-B21	21	34-1/2	23 3/4	1	742
FH-B24-S	24	34-1/2	23 3/4	1	787



### Base Cabinet Full Height Double Door

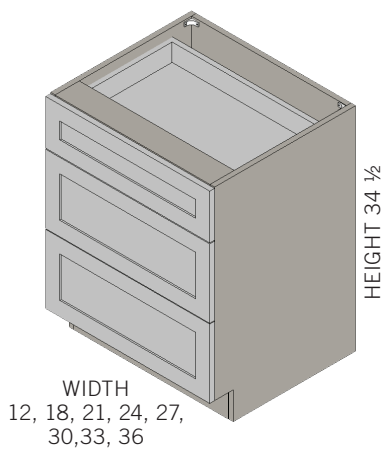
Item No.	Width	Height	Depth	Shelves	Price
FH-B24-2	24	34-1/2	23 3/4	1	817
FH-B27	27	34-1/2	23 3/4	1	862
FH-B30	30	34-1/2	23 3/4	1	889
FH-B33	33	34-1/2	23 3/4	1	952
FH-B36	36	34-1/2	23 3/4	1	999
FH-B39	39	34-1/2	23 3/4	1	1026
FH-B42	42	34-1/2	23 3/4	1	1076
FH-B45	45	34-1/2	23 3/4	1	1158
FH-B48	48	34-1/2	23 3/4	1	1238

## Two Drawer Base



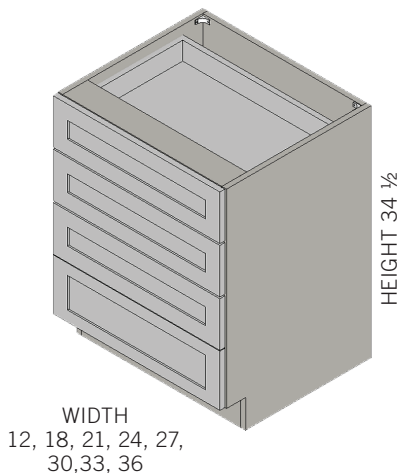
Item No.	Width	Height	Depth	Shelves	Price
DB12-2	12	34-1/2	23 3/4	0	787
DB15-2	15	34-1/2	23 3/4	0	824
DB18-2	18	34-1/2	23 3/4	0	865
DB21-2	21	34-1/2	23 3/4	0	962
DB24-2	24	34-1/2	23 3/4	0	1015
DB27-2	27	34-1/2	23 3/4	0	1035
DB30-2	30	34-1/2	23 3/4	0	1049
DB33-2	33	34-1/2	23 3/4	0	1112
DB36-2	36	34-1/2	23 3/4	0	1179

## Three Drawer Base



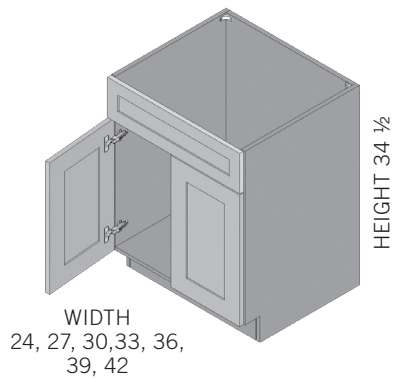
Item No.	Width	Height	Depth	Shelves	Price
DB12-3	12	34-1/2	23 3/4	0	807
DB15-3	15	34-1/2	23 3/4	0	844
DB18-3	18	34-1/2	23 3/4	0	885
DB21-3	21	34-1/2	23 3/4	0	982
DB24-3	24	34-1/2	23 3/4	0	1035
DB27-3	27	34-1/2	23 3/4	0	1055
DB30-3	30	34-1/2	23 3/4	0	1069
DB33-3	33	34-1/2	23 3/4	0	1132
DB36-3	36	34-1/2	23 3/4	0	1199

## Four Drawer Base

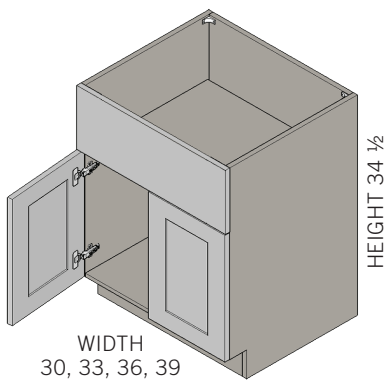


Item No.	Width	Height	Depth	Shelves	Price
DB12-4	12	34-1/2	23 3/4	0	995
DB15-4	15	34-1/2	23 3/4	0	1058
DB18-4	18	34-1/2	23 3/4	0	1109
DB21-4	21	34-1/2	23 3/4	0	1162
DB24-4	24	34-1/2	23 3/4	0	1212
DB27-4	27	34-1/2	23 3/4	0	1278
DB30-4	30	34-1/2	23 3/4	0	1339
DB33-4	33	34-1/2	23 3/4	0	1399
DB36-4	36	34-1/2	23 3/4	0	1452

## Sink Base



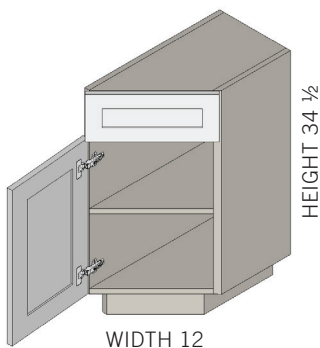
Item No.	Width	Height	Depth	Shelves	Price
SB24-S	24	34-1/2	23 3/4	0	698
SB24-2	24	34-1/2	23 3/4	0	723
SB27	27	34-1/2	23 3/4	0	808
SB30	30	34-1/2	23 3/4	0	863
SB33	33	34-1/2	23 3/4	0	918
SB36	36	34-1/2	23 3/4	0	971
SB39	39	34-1/2	23 3/4	0	1026
SB42	42	34-1/2	23 3/4	0	1081
SB45	45	34-1/2	23 3/4	0	1162
SB48	48	34-1/2	23 3/4	0	1240



## Farm Sink Bases

Item No.	Width	Height	Depth	Shelves	Price
FSB30	30	34-1/2	23 3/4	0	885
FSB33	33	34-1/2	23 3/4	0	932
FSB36	36	34-1/2	23 3/4	0	986
FSB39	39	34-1/2	23 3/4	0	1040

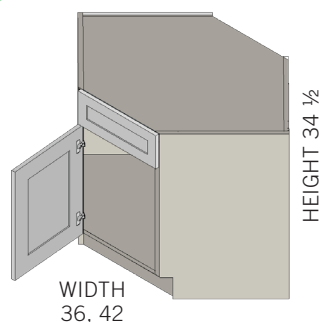
Front Panel Ships Loose, Panel Height is 11-7/8"



## Angle Base Cabinet

Item No.	Width	Height	Depth	Shelves	Price
BEA12R	12	34-1/2	23 3/4	1	643
BEA12L	12	34-1/2	23 3/4	1	643

HINGES ALWAYS ON LONG SIDE



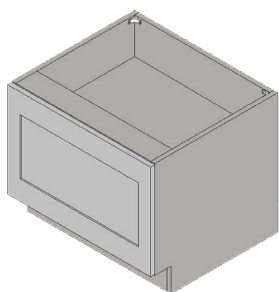
## Angle Sink Base

Item No.	Width	Height	Depth	Shelves	Price
ASB36	36	34-1/2	24	0	1399
ASB42	42	34-1/2	24	0	1528

The ASB box is designed to protrude 1/4"  
For proper door alignment to adjacent cabinets

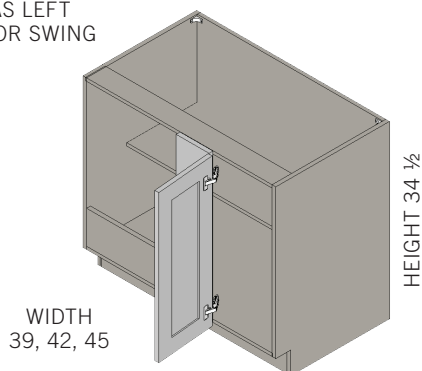
NUMBER OF DOORS: 36" HAS ONE DOOR. 42" HAS TWO DOORS

## Single Drawer 18" High Base



Item No.	Width	Height	Depth	Shelves	Price
DB18-1	18	15-3/4	23 3/4	0	789
DB21-1	21	15-3/4	23 3/4	0	830
DB24-1	24	15-3/4	23 3/4	0	871
DB27-1	27	15-3/4	23 3/4	0	932
DB30-1	30	15-3/4	23 3/4	0	979
DB33-1	33	15-3/4	23 3/4	0	1042
DB36-1	36	15-3/4	23 3/4	0	1093

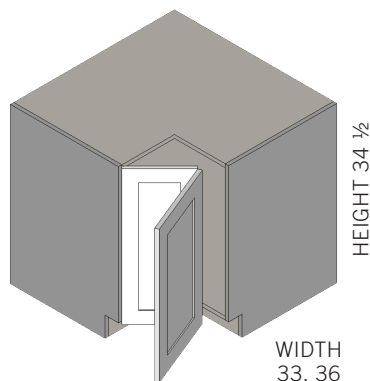
SHOWN  
AS LEFT  
DOOR SWING



## Base Blind Corner

Item No.	Width	Height	Depth	Shelves	Price
BCB39-L	39	34-1/2	23 3/4	1	1046
BCB39-R	39	34-1/2	23 3/4	1	1046
BCB42-L	42	34-1/2	23 3/4	1	1122
BCB42-R	42	34-1/2	23 3/4	1	1122
BCB45-L	45	34-1/2	23 3/4	1	1193
BCB45-R	45	34-1/2	23 3/4	1	1193

Door sizes are 11<sup>7/8"</sup>, 14<sup>7/8"</sup> and 17<sup>7/8"</sup> Respectively

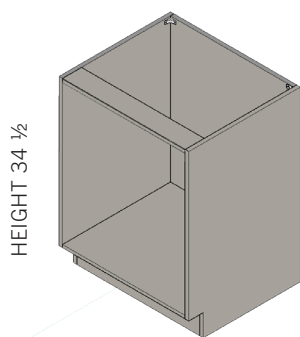


## Base Easy Reach

Item No.	Width	Height	Depth	Shelves	Price
LS33	33	34-1/2	23 3/4	0	1326
LS36	36	34-1/2	23 3/4	0	1427

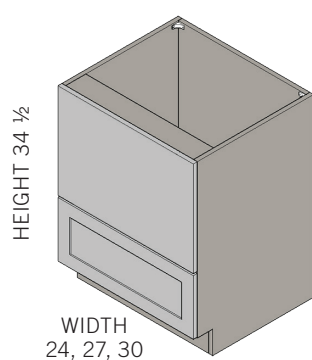
Lazy Susan Inserts Available. See Accessories Page

DOOR SIZES: 33" DOORS ARE 8 1/8. 36" ARE 11 1/8



### Base Oven Cabinet

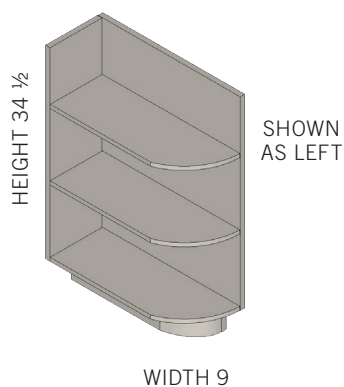
Item No.	Width	Height	Depth	Price
BOC27	27	34 <sup>1/2</sup>	23 3/4	602
BOC30	30	34 <sup>1/2</sup>	23 3/4	664
BOC33	33	34 <sup>1/2</sup>	23 3/4	742



### Microwave Base Cabinet

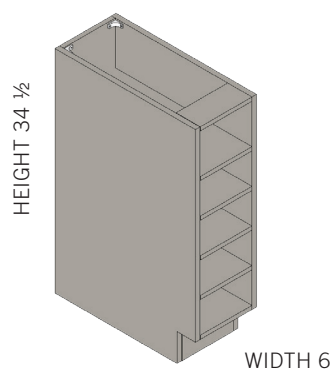
Item No.	Width	Height	Depth	Shelves	Price
MWB24	24	34-1/2	23 3/4	0	734
MWB27	27	34-1/2	23 3/4	0	832
MWB30	30	34-1/2	23 3/4	0	930

Front Panel Ships Loose, Panel Height is 18-9/16"



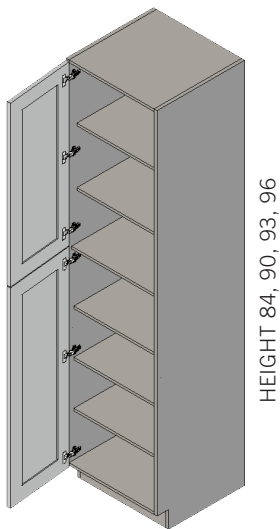
### Base Open End Cabinet

Item No.	Width	Height	Depth	Price
BEC9 R/L	9	34 <sup>1/2</sup>	23 3/4	427



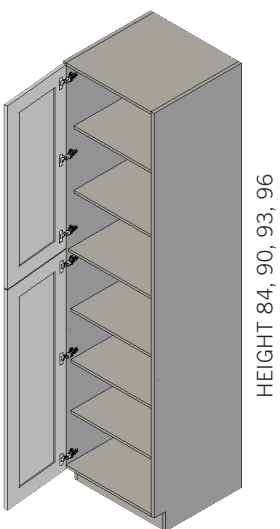
### Base Wine Rack

Item No.	Width	Height	Depth	Price
BWR6	6	34 <sup>1/2</sup>	23 3/4	400



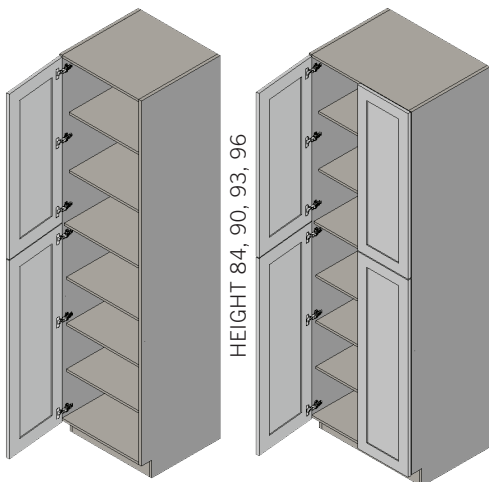
### Utility Cabinet 12" Wide Single Door

Item No.	Width	Height	Depth	Shelves	Price
UC1284	12	84	23 3/4	4	1329
UC1290	12	90	23 3/4	4	1429
UC1293	12	93	23 3/4	4	1441
UC1296	12	96	23 3/4	5	1451



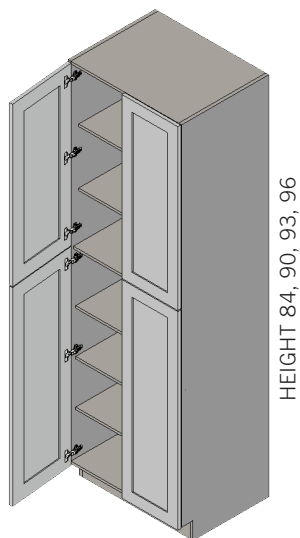
### Utility Cabinet 18" Wide Single Door

Item No.	Width	Height	Depth	Shelves	Price
UC1884	18	84	23 3/4	4	1758
UC1890	18	90	23 3/4	4	1918
UC1893	18	93	23 3/4	4	1995
UC1896	18	96	23 3/4	5	2071



### Utility Cabinet 24" Wide Single or Double Door

Item No.	Width	Height	Depth	Shelves	Price
UC2484-S	24	84	23 3/4	4	1858
UC2490-S	24	90	23 3/4	4	2057
UC2493-S	24	93	23 3/4	4	2080
UC2496-S	24	96	23 3/4	5	2102
UC2484-2	24	84	23 3/4	4	1930
UC2490-2	24	90	23 3/4	4	2129
UC2493-2	24	93	23 3/4	4	2152
UC2496-2	24	96	23 3/4	5	2174



HEIGHT 84, 90, 93, 96

### Utility Cabinet 30" Wide Double Door

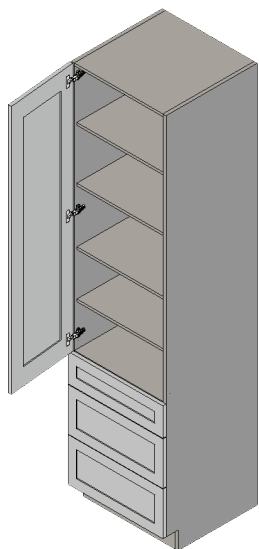
Item No.	Width	Height	Depth	Shelves	Price
UC3084	30	84	23 3/4	4	2132
UC3090	30	90	23 3/4	4	2282
UC3093	30	93	23 3/4	4	2371
UC3096	30	96	23 3/4	5	2460



HEIGHT 84, 90, 93, 96

### Utility Cabinet 36" Wide Double Door

Item No.	Width	Height	Depth	Shelves	Price
UC3684	36	84	23 3/4	4	3314
UC3690	36	90	23 3/4	4	3634
UC3693	36	93	23 3/4	4	3788
UC3696	36	96	23 3/4	5	3940

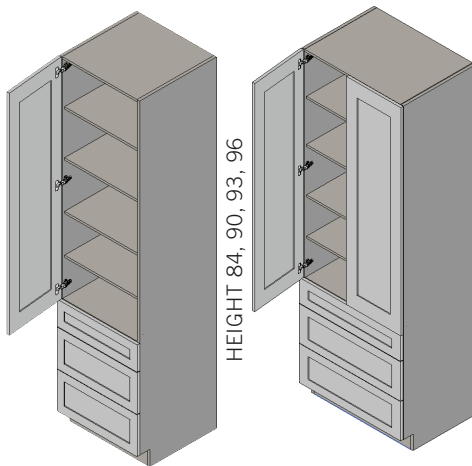


HEIGHT 84, 90, 93, 96

### Utility Cabinet with Drawer Base 12" Wide

Item No.	Width	Height	Depth	Shelves	Price
UTD1284	12	84	23 3/4	3	2136
UTD1290	12	90	23 3/4	3	2236
UTD1293	12	93	23 3/4	3	2248
UTD1296	12	96	23 3/4	4	2258

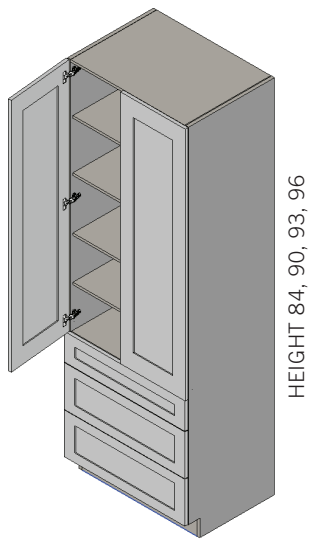
LINES UP WITH DB-3



### Utility Cabinet with Drawer Base 24" Wide Single or Double Door

Item No.	Width	Height	Depth	Shelves	Price
UTD242484-S	24	84	23 3/4	3	2893
UTD242490-S	24	90	23 3/4	3	3092
UTD242493-S	24	93	23 3/4	3	3115
UTD242496-S	24	96	23 3/4	4	3137
UTD242484-2	24	84	23 3/4	3	2965
UTD242490-2	24	90	23 3/4	3	3164
UTD242493-2	24	93	23 3/4	3	3187
UTD242496-2	24	96	23 3/4	4	3209

LINES UP WITH DB-3



### Utility Cabinet with Drawer Base 36" Wide Double Door

Item No.	Width	Height	Depth	Shelves	Price
UTD362484	36	84	23 3/4	3	4513
UTD362490	36	90	23 3/4	3	4833
UTD362493	36	93	23 3/4	3	4987
UTD362496	36	96	23 3/4	4	5139

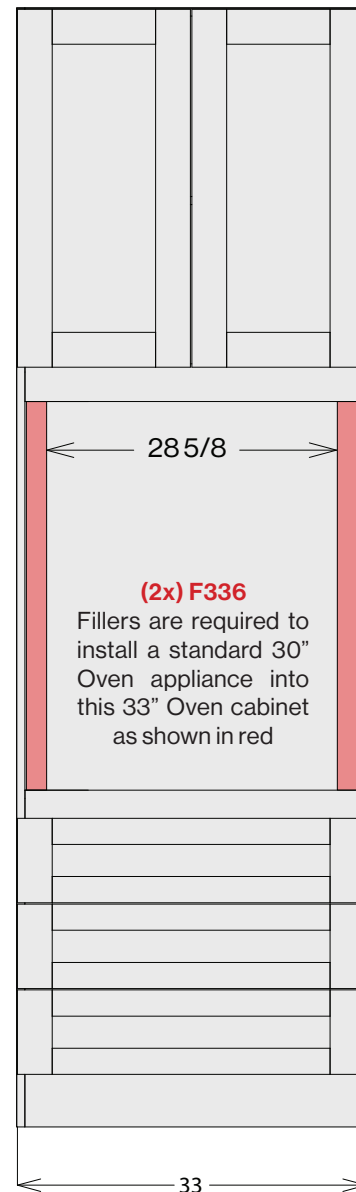
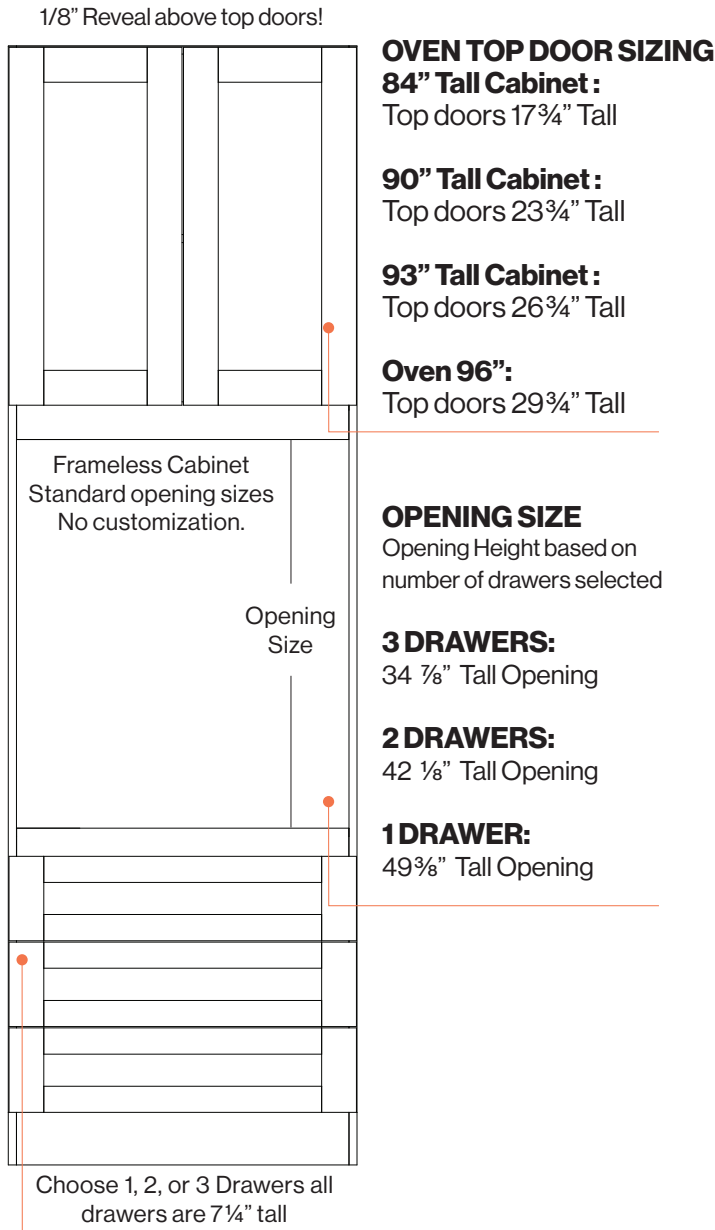
LINES UP WITH DB-3

## Appliance Fillers (Oven Cabinets)

When ordering cabinets that will hold appliances such as wall ovens or in some cases larger Microwaves. **It is very important to note that this cabinet line is frameless.** Its advised that you size your appliance or cabinet to match or fillers will be required for install.

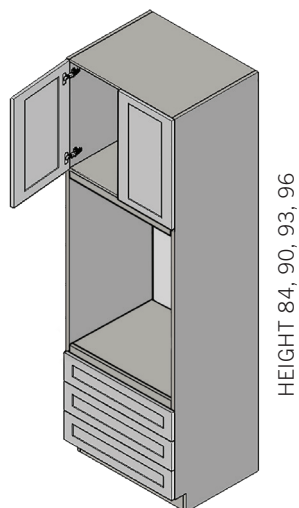
### EXAMPLE (When fillers are required)

If you have a 30" oven it will roughly have a cutout of 28.5" wide best fit our 30" oven cabinet. To install a 30" Oven appliance into a 33" oven cabinet fillers would be required as shown below in red.



To ensure best fit of all appliances, specifications must be submitted at the time or before processing of your order into the production queue.

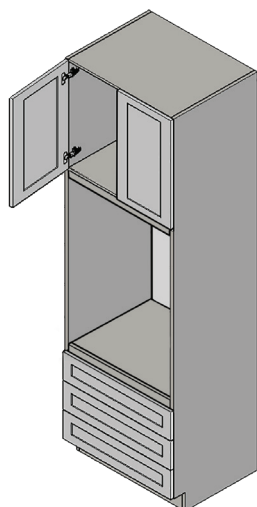
**Orders processed without specifications are liable to be placed on hold until they are received!**



HEIGHT 84, 90, 93, 96

### Oven Cabinets With Drawers 27" Wide

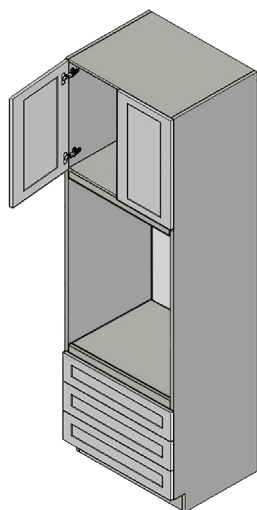
Item No.	Width	Height	Depth	Shelves	Price
OC2784	27	84	23 3/4	0	2075
OC2790	27	90	23 3/4	0	2196
OC2793	27	93	23 3/4	0	2251
OC2796	27	96	23 3/4	0	2306



HEIGHT 84, 90, 93, 96

### Oven Cabinets With Drawers 30" Wide

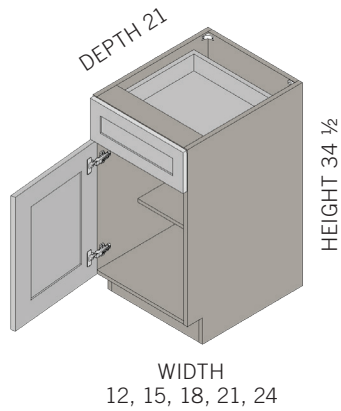
Item No.	Width	Height	Depth	Shelves	Price
OC3084	30	84	23 3/4	0	2305
OC3090	30	90	23 3/4	0	2440
OC3093	30	93	23 3/4	0	2501
OC3096	30	96	23 3/4	0	2562



HEIGHT 84, 90, 93, 96

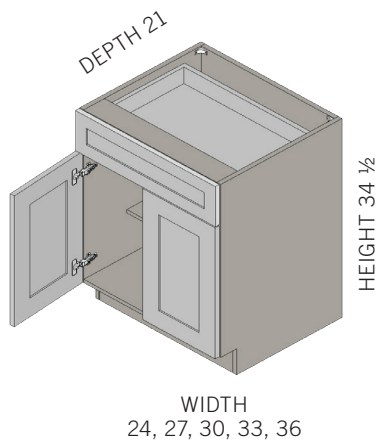
### Oven Cabinets With Drawers 33" Wide

Item No.	Width	Height	Depth	Shelves	Price
OC3384	33	84	23 3/4	0	2997
OC3390	33	90	23 3/4	0	3172
OC3393	33	93	23 3/4	0	3251
OC3396	33	96	23 3/4	0	3330



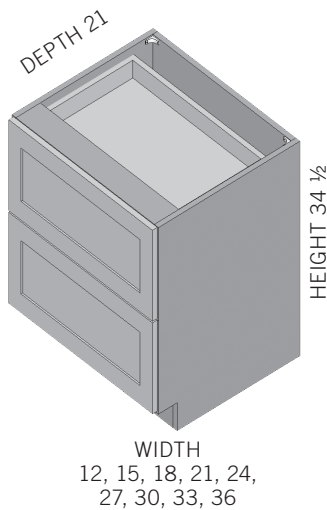
### Vanity Base Cabinets Single Door

Item No.	Width	Height	Depth	Shelves	Price
VB12	12	34-1/2	21	1	547
VB15	15	34-1/2	21	1	564
VB18	18	34-1/2	21	1	618
VB21	21	34-1/2	21	1	672
VB24-S	24	34-1/2	21	1	799



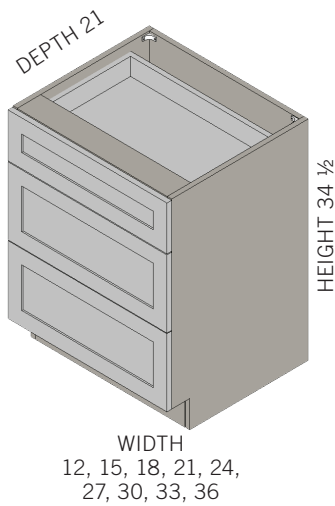
### Vanity Base Cabinets Double Door

Item No.	Width	Height	Depth	Shelves	Price
VB24-2	24	34-1/2	21	1	811
VB27	27	34-1/2	21	1	832
VB30	30	34-1/2	21	1	885
VB33	33	34-1/2	21	1	932
VB36	36	34-1/2	21	1	986



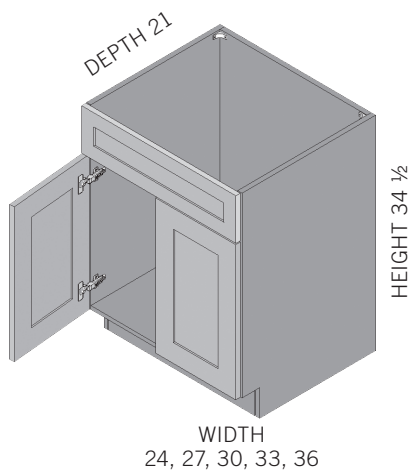
### Vanity Two Drawer Base Cabinets

Item No.	Width	Height	Depth	Shelves	Price
VDB12-2	12	34-1/2	21	0	787
VDB15-2	15	34-1/2	21	0	824
VDB18-2	18	34-1/2	21	0	865
VDB21-2	21	34-1/2	21	0	962
VDB24-2	24	34-1/2	21	0	1015
VDB27-2	27	34-1/2	21	0	1035
VDB30-2	30	34-1/2	21	0	1049
VDB33-2	33	34-1/2	21	0	1112
VDB36-2	36	34-1/2	21	0	1179



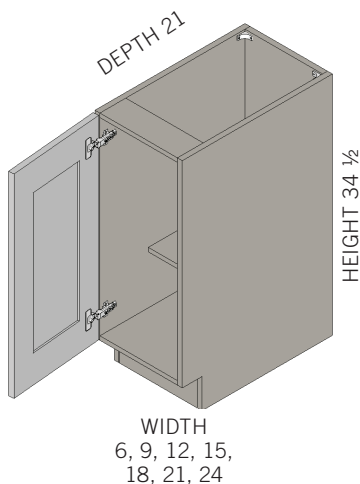
### Vanity Three Drawer Base

Item No.	Width	Height	Depth	Shelves	Price
VDB12-3	12	34-1/2	21	0	807
VDB15-3	15	34-1/2	21	0	844
VDB18-3	18	34-1/2	21	0	885
VDB21-3	21	34-1/2	21	0	982
VDB24-3	24	34-1/2	21	0	1035
VDB27-3	27	34-1/2	21	0	1055
VDB30-3	30	34-1/2	21	0	1069
VDB33-3	33	34-1/2	21	0	1132
VDB36-3	36	34-1/2	21	0	1199



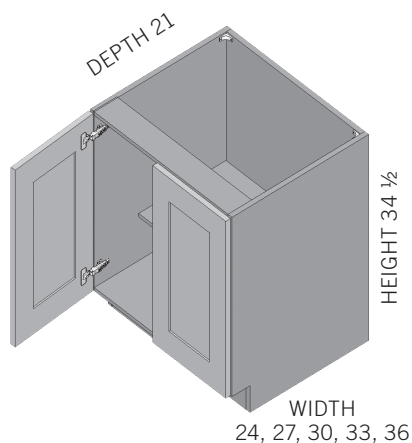
### Vanity Sink Bases

Item No.	Width	Height	Depth	Shelves	Price
VS24-S	24	34-1/2	21	0	799
VS24-2	24	34-1/2	21	0	811
VS27	27	34-1/2	21	0	835
VS30	30	34-1/2	21	0	863
VS33	33	34-1/2	21	0	915
VS36	36	34-1/2	21	0	971



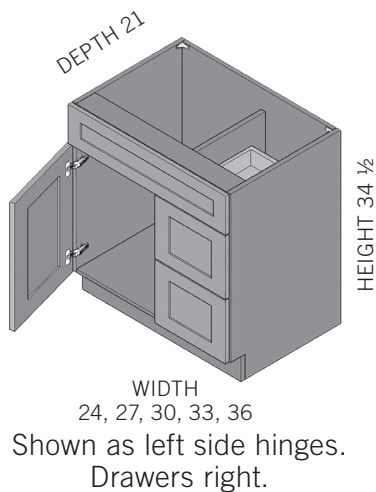
### Vanity Base Full Height Single Door

Item No.	Width	Height	Depth	Shelves	Price
FHVB06	6	34-1/2	21	1	407
FHVB09	9	34-1/2	21	1	453
FHVB12	12	34-1/2	21	1	542
FHVB15	15	34-1/2	21	1	602
FHVB18	18	34-1/2	21	1	664
FHVB21	21	34-1/2	21	1	742
FHVB24-S	24	34-1/2	21	1	787



### Vanity Bases Full Height Door Double Door

Item No.	Width	Height	Depth	Shelves	Price
FHVB24-2	24	34-1/2	21	1	817
FHVB27	27	34-1/2	21	1	862
FHVB30	30	34-1/2	21	1	889
FHVB33	33	34-1/2	21	1	952
FHVB36	36	34-1/2	21	1	999

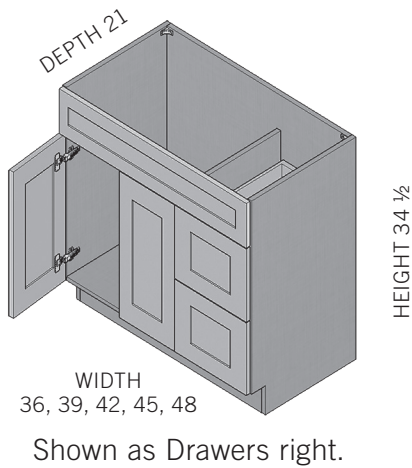


### Combo Vanity Sink Bases Full Height Single Door Two Drawer (Fixed top drawer front)

Item No.	Width	Height	Depth	Shelves	Price
CVSB24	24	34-1/2	21	0	1349
CVSB27	27	34-1/2	21	0	1409
CVSB30	30	34-1/2	21	0	1471
CVSB33	33	34-1/2	21	0	1549
CVSB36-S	36	34-1/2	21	0	1594

As standard, drawers are 12" wide.

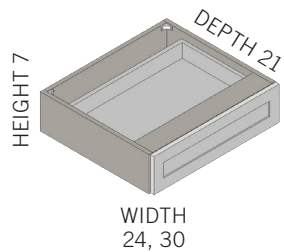
Please note in order right or left hinges and side of drawers



### Combo Vanity Sink Bases Full Height Double Door Two Drawer (Fixed top drawer front)

Item No.	Width	Height	Depth	Shelves	Price
CVSB36-2	36	34-1/2	21	0	1606
CVSB39	39	34-1/2	21	0	1618
CVSB42	42	34-1/2	21	0	1642
CVSB45	45	34-1/2	21	0	1670
CVSB48	48	34-1/2	21	0	1722

As standard, drawers are 12" wide.  
Please note in order side of drawers



### Vanity Knee Drawer

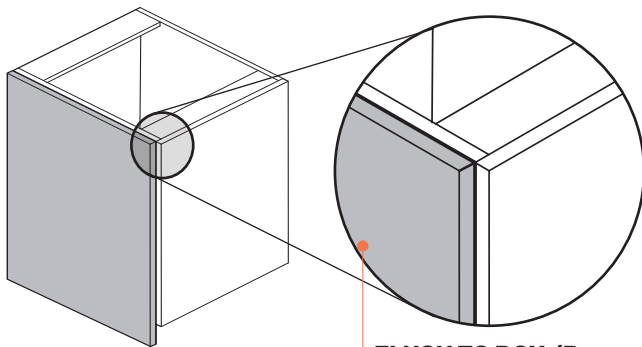
Item No.	Width	Height	Depth	Price
VDK24	24	7	21	155
VDK30	30	7	21	170

## Sizing Panels

When ordering Painted, SoHo, or Finished panels it is important to notate the size required to fit your desired appearance. Adornus requires sizes to be specified before they can be ordered.

An End panels **width should match cabinets depth** while the **height matches the height of the cabinet**. It is important to account for factors like if the panel will be flush to the box or the door or if it rest atop of the toe kick or extends to the floor. **Adornus will not remake panels that were ordered incorrectly or accidentally.**

**When stacking cabinets that will have end panels Adornus will not size specific panels required for the project. The designer or dealer must provide sizes required for the project. In some cases panels may need to be split as the maximum length on one side is 96".**



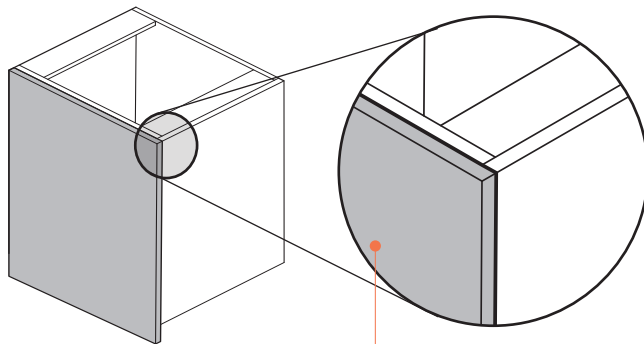
BFH-2430

**FLUSH TO BOX (Base cabinet)**  
Edge of door will be visible.

### Base Cabinet Example (Flush to Box)

Item No.	Width	Height	
REP	23 3/4	30	Extends to Toekick
REP	23 3/4	34 1/2	Extends to Floor Add 4 & 1/2"

Edge of door will be visible In both examples.



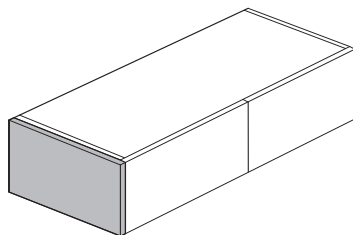
BFH-2430

**FLUSH TO DOOR (Base Cabinet)**  
Extend End Panel 7/8"  
to Cover Door

### Base Cabinet Example (Flush to Door)

Item No.	Width	Height	
REP	24 5/8	30	Extends to Toekick
REP	24 5/8	34 1/2	Extends to Floor Add 4 & 1/2"

Eged of door is covered add an additional 7/8"



W2412-2

(wall cabinet with standard 13" inch depth)

### Wall Cabinet Examples

Item No.	Width	Height
REP	13	12
REP	13 7/8	12

Extends to Box Edge

Extends to cover Door add 7/8"



### Painted Panels

Item No.	Width	Price
REP	3/4	36 sq ft

Edgebanded on all sides Finished front and Back.

**Please Specify Size when ordering.**

WIDTH X HEIGHT (in inches) DIVIDED BY 144 X \$36 **EQUALS LIST PRICE**

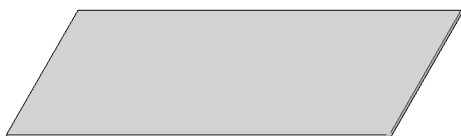
### SoHo Panel

Item No.	Width	Price
SOHO PNL	3/4	49 sq ft

Edgebanded on all sides Finished front and Back.

**Please Specify Size when ordering.**

WIDTH X HEIGHT (in inches) DIVIDED BY 144 X \$49 **EQUALS LIST PRICE**



### Finish Back Panel

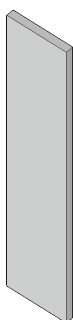
Item No.	Width	Height	Depth	Price
FBP4896	96	48	1/4	449

Sides not edgebanded



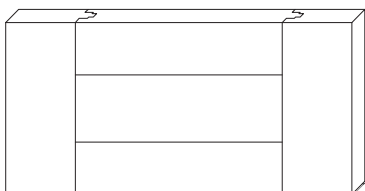
### Filler 3"

Item No.	Width	Height	Depth	Price
F330	3	30	3/4	90
F336	3	36	3/4	107
F342	3	42	3/4	127
F396	3	96	3/4	285



### Filler 6"

Item No.	Width	Height	Depth	Price
F630	6	30	3/4	214
F636	6	36	3/4	227
F642	6	42	3/4	250
F696	6	96	3/4	570



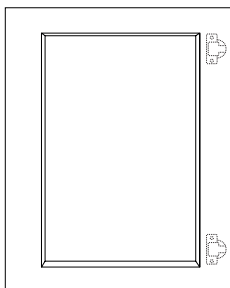
## Custom Drawer Front

Item No.	Price
DRWFRONT	80 sq. ft.

WIDTH X HEIGHT (in inches) DIVIDED BY 144 X \$80  
EQUALS LIST PRICE

MINIMUM SIZE OF DRAWER 9" WIDE X 7.25" HIGH  
MAXIMUM SIZE OF DRAWER 48" WIDE X 24" HIGH

**DRAWER FRONTS UNDER 2 SQ FT WILL INCUR  
A ADDITIONAL MINIMUM NET CHARGE OF 50\$**



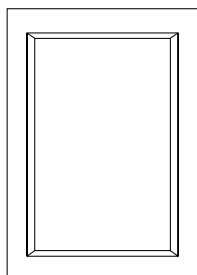
## Custom Doors - Drilled for Hinges

Item No.	Price
DOOR	80 sq. ft.

WIDTH X HEIGHT (in inches) DIVIDED BY 144 X \$80  
EQUALS LIST PRICE

MAXIMUM SIZE OF DOOR 36" WIDE X 96" HIGH  
**DOORS OVER 48" HIGH** WILL BE PRODUCED WITH A  
CENTERED HORIZONTAL RAIL.

**CUSTOM DOORS UNDER 2 SQ FT WILL INCUR A  
ADDITIONAL MINIMUM NET CHARGE OF 50\$**



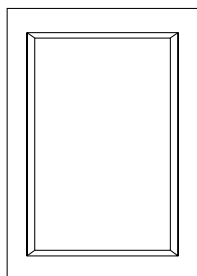
## Custom Deco Panel - No Hinge Prep

Item No.	Price
DECOPNL	80 sq. ft.

WIDTH X HEIGHT (in inches) DIVIDED BY 144 X \$80  
EQUALS LIST PRICE

MAXIMUM SIZE OF DECO PANEL 36" WIDE X 96" HIGH

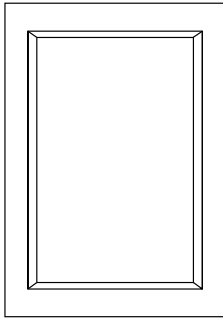
**DECO PANELS UNDER 2 SQ FT WILL INCUR A  
ADDITIONAL MINIMUM NET CHARGE OF 50\$**



## Remove Hinge Prep

Item No.	Price
RHP	NO CHARGE

PLEASE NOTE THE SPECIFIC CABINET AND DOOR ON  
ORDER FORM. DOOR FOR CABINET WILL BE  
PRODUCED AND WILL BE SHIPPED LOOSE.

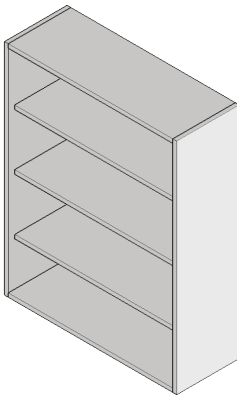


### Doors Prepared for Glass

Item No.	Price
GDP	0

ALL WALL, BASE, TALL AND VANITY DOORS CAN BE PREPARED FOR GLASS.  
PRICE IS PER DOOR.  
DOES NOT INCLUDE GLASS

Not Available in Fresno, Manhattan, & SoHo.

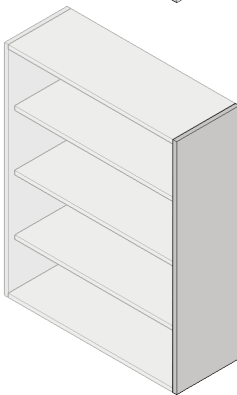


### Finished Interior

Item No.	Price
FIC	25% OF CABINET LIST PRICE

ALL WALL, BASE, TALL AND VANITY DOORS CAN BE PRODUCED WITH A FINISHED MATCHING INTERIOR. CABINET PRICE x 1.25 = TOTAL LIST PRICE

\*AS A STANDARD, TOP AND BOTTOM OF CABINET WILL ALSO BE FINISHED.



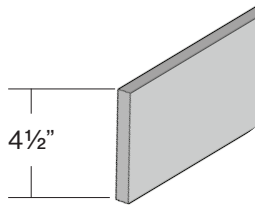
### Finished Ends

Item No.	Price
WFE	60
BFE	75
TFE	90

PRICE IS PER SIDE.

### Finished Bottoms for Wall Cabinet

Item No.	Price
FB	10% OF LIST PRICE

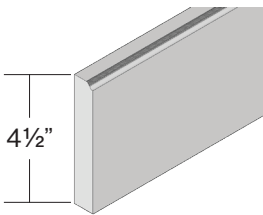


### Toe Kick

Item No.	Length	Height	Depth	Price
TK96	96	4 <sup>1/2</sup>	1/4	82

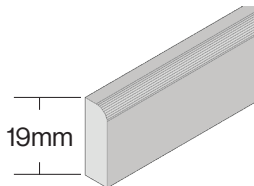
### Toe Kick 3/4" Plywood

Item No.	Length	Height	Depth	Price
PLTK96	96	4 <sup>1/2</sup>	3/4	108



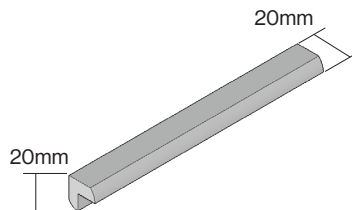
### Decorative Base Moulding

Item No.	Length	Height	Depth	Price
BM96	96	4 <sup>1/2</sup>	3/4	264



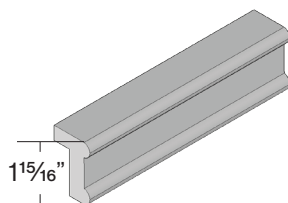
### Scribe Moulding

Item No.	Length	Height	Depth	Price
SM96	96	19mm	1/4	86



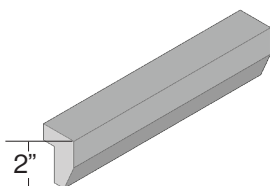
### Outside Corner Moulding

Item No.	Length	Height	Depth	Price
OCM	96	20mm	1/4	125



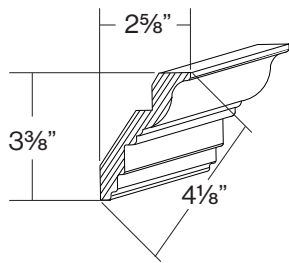
### Light Moulding Classic

Item No.	Length	Height	Depth	Price
LMC	96	2	3/4	195



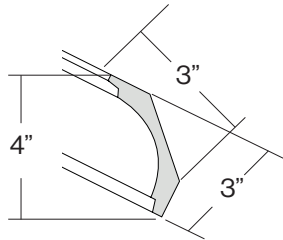
### Light Moulding Shaker

Item No.	Length	Height	Depth	Price
LMS	96	2	3/4	195



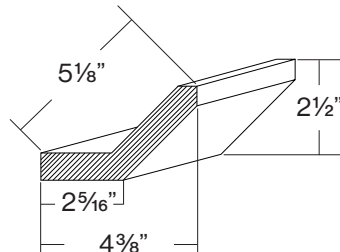
### Classic Crown Moulding

Item No.	Length	Height	Projection	Price
CCM	96	3 3/8	2 5/8	275



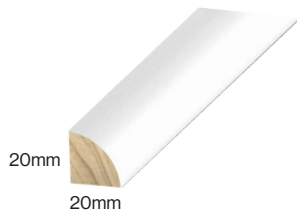
### Classic Cove Moulding

Item No.	Length	Height	Projection	Price
CVCM	96	3	3	275



### Angle Crown Moulding

Item No.	Length	Height	Projection	Price
ACM	96	2 1/2	4 3/8	380
ACM120	120	2 1/2	4 3/8	582



### Quarter Round Moulding

Item No.	Length	Height	Depth	Price
QR96	96	20mm	20mm	112



### Valance

Item No.	Width	Height	Depth	Price
VS36	36	5 1/2	3/4	246
VS48	48	5 1/2	3/4	276
VS60	60	5 1/2	3/4	306



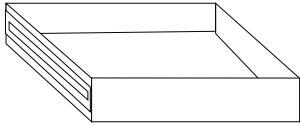
### Corbel

Item No.	Width	Height	Depth	Price
CRBL	5	10	5 3/4	904



### Corbel Shaker

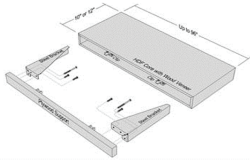
Item No.	Width	Height	Depth	Price
CRBL-SHAKER	5	9	6	931



### Rollout Tray

Item No.	Height	Price
ROT	4 1/4	325

CAN BE ADDED TO BASES, VANITIES  
AND TALL CABINETS



### Floating Shelves

Item No.	Price / Sq Ft
FSHLV	270



### Spindle Leg

Item No.	Width	Height	Depth	Price
SP4	4 3/4	35	4 3/4	971



### Fluted Square Post

Item No.	Width	Height	Depth	Price
FSP3X3	3	34 1/2	3	406
FSP6X6	6	34 1/2	6	773



### Soft Close Hinge and Plate

Item No.	Price
HINGE	12



### Soft Close Glides

Item No.	Depth	Price
SCGFD	21	202
SCGVD	19	186



### Touch-Up kit

Item No.	Price
TOUCHUPK	85





---

## TEN YEAR LIMITED WARRANTY

Adornus Cabinetry, LLC (“Adornus”) extends the following 10-year limited warranty (“Limited Warranty”) to the first residential purchaser (“Residential Purchaser”) of any cabinet sold by Adornus (each, a “Product”). This Limited Warranty is only applicable to Products sold to the first Residential Purchaser and used in the applications described below within the United States. Residential Purchaser may not assign or transfer this Limited Warranty. Under this Limited Warranty, a “Residential Purchaser” means any of the following:

a person who purchases and installs the Product in a dwelling that is owned and used by that person as his/her primary or secondary home; or

any person or business such as a builder, contractor or developer that purchases and installs the Product in a newly constructed or remodeled dwelling that will be used by the initial owner/purchaser of that dwelling as a primary or secondary home. In such situation, this Limited Warranty may be assigned to the initial owner/purchaser who uses the dwelling as a primary or secondary home, but may not be transferred or assigned to subsequent owners of the dwelling.

Under this Limited Warranty, a primary or secondary home does not include rental property. This Limited Warranty does not apply to landlords, leasing companies, or other commercial purchasers.

Subject to the exclusions and limitations set forth in this Limited Warranty, Adornus warrants to Residential Purchaser that each Product will be free from defects in material and workmanship, under normal use and maintenance, for the applicable warranty period stated below. This Limited Warranty gives Residential Purchaser specific legal rights, and Residential Purchaser may have other rights which vary from State to State.

This Limited Warranty for Residential Purchasers begins on the date the Product was purchased, whether purchased by the Residential Purchaser or by a third party on Residential Purchaser’s behalf. This Limited Warranty is only valid if Residential Purchaser uses the dwelling as his/her primary or secondary home and does not extend to future owners if the property is sold.

THIS LIMITED WARRANTY IS ADORNUS’ SOLE AND EXCLUSIVE WARRANTY WITH RESPECT TO THE PRODUCTS. ALL IMPLIED WARRANTIES ARE STRICTLY LIMITED TO THE DURATION OF THE LIMITED WARRANTY APPLICABLE TO THE PRODUCT AS STATED HEREIN, INCLUDING BUT NOT LIMITED TO, ANY WARRANTY OF MERCHANTABILITY OR OF FITNESS FOR A PARTICULAR PURPOSE. IN NO EVENT SHALL ADORNUS BE LIABLE TO THE RESIDENTIAL PURCHASER OR ANY THIRD PARTY FOR INCIDENTAL OR CONSEQUENTIAL DAMAGES, INCLUDING, WITHOUT LIMITATION, DAMAGES ARISING FROM PERSONAL INJURY, LOST PROFITS, LOSS OF BUSINESS OPPORTUNITY, LOSS OF PROPERTY, ECONOMIC LOSSES, OR STATUTORY OR EXEMPLARY DAMAGES, WHETHER FROM NEGLIGENCE, WARRANTY, STRICT LIABILITY OR OTHERWISE.

**EXCLUSIONS:** This Limited Warranty does not apply to any Product:

- installed or used outdoors;
- used for purposes for which it is not designed or intended by Adornus;
- that has been subjected to misuse, vandalism, abuse, negligence, accident, or unauthorized modifications;
- that has been improperly stored (if the Product must be stored, it should be covered and stored in a humidity and temperature-controlled environment, away from direct sunlight);

- that has been improperly installed, cleaned, or maintained (for more information regarding the proper use
- that has been improperly installed, cleaned, or maintained (for more information regarding the proper use and care of the Product, please consult the applicable Use and Care Instructions that accompanied the Product.
- that has been subjected to improper temperature, moisture and/or humidity extremes (temperature outside the range of 50-85°F (10-29°C) and humidity outside the range of 30-55% are considered extreme);
- damaged by fire, flood, acts of God, or other external causes beyond Adornus' control;
- varying in color and characteristics due to age, sunlight, smoke, or other environmental conditions;
- exhibiting any effects on the color and/or integrity of the finish or appearance due to the use of abrasive cleaners, cleaners that contain chlorine, acidic cleaners, scuffing sponges or steel wool; and/or
- exhibiting normal wear and tear.

In addition, natural woods may vary in color and characteristics and exhibit subtle changes as they age. For example, painted doors, drawer fronts, and face frames may eventually have visible cracking around the joint area, and cabinet colors may darken or lighten over time. These variations are considered to be the nature of the material in relation to their environmental exposure and are not covered under this Limited Warranty.

**SOLE AND EXCLUSIVE REMEDY:** In the event of a defect in the workmanship or materials of a Product occurring during the Limited Warranty period described above, Adornus will, at its sole option, repair or replace any defective Product or Product component; provided, if it is not commercially feasible to repair or replace a defective Product or Product component, Adornus may refund the original price paid by Residential Purchaser for the defective Product or Product component, or provide a credit towards a similar type of product sold by Adornus. The foregoing, at Adornus' option, are the Residential Purchaser's sole and exclusive remedies for any Product defect or non-conformity. In addition, by way of example but not limitation, the following costs and expenses are not covered by this Limited Warranty: (1) labor costs for the original installation, removal, or reinstallation of the Product, or any defective part thereof; (2) labor costs or material charges for the removal, reinstallation, repainting, refinishing or replacement of any other items or building materials which must be removed, replaced, reinstalled, or refinished in order to repair or replace the defective Product or component. For example, costs associated with the following will not be reimbursed: counters, sinks, tiles, flooring, accessories, appliances or plumbing fixtures. When a claim for warpage, joint separation or wood growth is submitted, Adornus may, at its sole option and after inspection, defer action for up to twelve (12) months to allow the Product to acclimate to the installed environment. Further, Adornus reserves the right to modify or alter any Product design, specifications or materials without obligation to make similar changes to Products previously sold by Adornus. The repair or replacement remedies offered by Adornus under this Limited Warranty are contingent on the current Product offerings of styles and construction options within Adornus' Product line at the time a warranty claim is made by Residential Purchaser. If a valid warranty claim is filed for an obsolete Product, Adornus reserves the right, at its sole option, to honor its repair or replacement obligations under this Limited Warranty by either: (1) replacing the affected Product or component with a new Product or component of the same or approximate style or color from Adornus' current Product line or offerings; or (2) replacing the affected Product or component to achieve a uniform appearance with a similar or comparable product style or approximate color of the originally purchased Product style. If a Product or components are replaced or repaired, Adornus cannot guarantee an exact match with the finish or appearance of other products or fixtures installed at Residential Purchaser's dwelling. This is due to changes that may occur during the Products' natural aging process, which may affect its color and/or grain.

**LIMITATION OF LIABILITY:** Except as otherwise required by applicable law, the remedies described above are the Residential Purchaser's sole and exclusive remedies and Adornus' entire liability for any breach of this Limited Warranty. Adornus' total liability shall under no circumstances exceed the actual amount paid by Residential Purchaser for the defective product.

All potential claims hereunder must be submitted to Adornus, in writing, at the address below and must specify the defects present in the Products and/or Product components.



**adornus™**

The heart of your home

**Manufacturing**

1551 Hwy 9 Bypass W,  
Lancaster, SC 29720

**Northeast Region**

2559 Route 130  
Cranbury, NJ 08512

**Southeast Region**

10813 NW 30th Street  
SUITE #100  
Doral, Florida 33172

adornus.com  
803-830-3200